

WESTCHESTER COUNTY

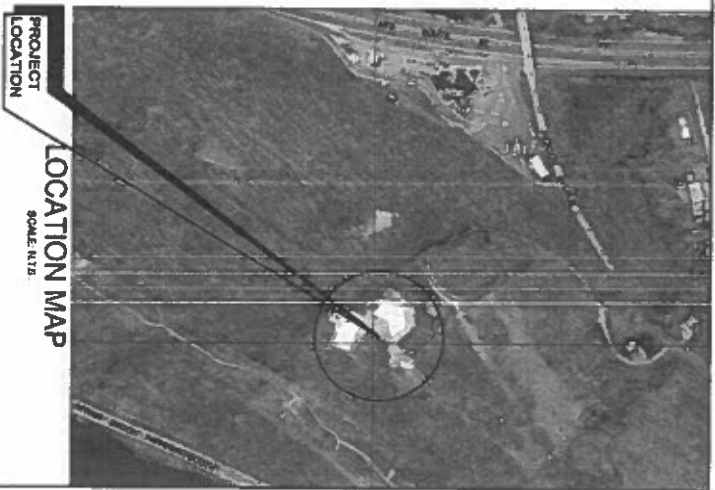
Westchester
gov.com

WESTCHESTER COUNTY, NEW YORK
DEPARTMENT OF PUBLIC WORKS AND TRANSPORTATION
DIVISION OF ENGINEERING

CONTRACT No. 07-549 REV.
POOL MODERNIZATION
SPRAIN RIDGE PARK
YONKERS, NEW YORK

Item No.	Description
1	1.1. CONSTRUCTION
2	2.1. CONSTRUCTION
3	3.1. CONSTRUCTION
4	4.1. CONSTRUCTION
5	5.1. CONSTRUCTION
6	6.1. CONSTRUCTION
7	7.1. CONSTRUCTION
8	8.1. CONSTRUCTION
9	9.1. CONSTRUCTION
10	10.1. CONSTRUCTION
11	11.1. CONSTRUCTION
12	12.1. CONSTRUCTION
13	13.1. CONSTRUCTION
14	14.1. CONSTRUCTION
15	15.1. CONSTRUCTION
16	16.1. CONSTRUCTION
17	17.1. CONSTRUCTION
18	18.1. CONSTRUCTION
19	19.1. CONSTRUCTION
20	20.1. CONSTRUCTION
21	21.1. CONSTRUCTION
22	22.1. CONSTRUCTION
23	23.1. CONSTRUCTION
24	24.1. CONSTRUCTION
25	25.1. CONSTRUCTION
26	26.1. CONSTRUCTION
27	27.1. CONSTRUCTION
28	28.1. CONSTRUCTION
29	29.1. CONSTRUCTION
30	30.1. CONSTRUCTION
31	31.1. CONSTRUCTION
32	32.1. CONSTRUCTION
33	33.1. CONSTRUCTION
34	34.1. CONSTRUCTION
35	35.1. CONSTRUCTION
36	36.1. CONSTRUCTION
37	37.1. CONSTRUCTION
38	38.1. CONSTRUCTION
39	39.1. CONSTRUCTION
40	40.1. CONSTRUCTION
41	41.1. CONSTRUCTION
42	42.1. CONSTRUCTION
43	43.1. CONSTRUCTION
44	44.1. CONSTRUCTION
45	45.1. CONSTRUCTION
46	46.1. CONSTRUCTION
47	47.1. CONSTRUCTION
48	48.1. CONSTRUCTION
49	49.1. CONSTRUCTION
50	50.1. CONSTRUCTION
51	51.1. CONSTRUCTION
52	52.1. CONSTRUCTION
53	53.1. CONSTRUCTION
54	54.1. CONSTRUCTION
55	55.1. CONSTRUCTION
56	56.1. CONSTRUCTION
57	57.1. CONSTRUCTION
58	58.1. CONSTRUCTION
59	59.1. CONSTRUCTION
60	60.1. CONSTRUCTION
61	61.1. CONSTRUCTION
62	62.1. CONSTRUCTION
63	63.1. CONSTRUCTION
64	64.1. CONSTRUCTION
65	65.1. CONSTRUCTION
66	66.1. CONSTRUCTION
67	67.1. CONSTRUCTION
68	68.1. CONSTRUCTION
69	69.1. CONSTRUCTION
70	70.1. CONSTRUCTION
71	71.1. CONSTRUCTION
72	72.1. CONSTRUCTION
73	73.1. CONSTRUCTION
74	74.1. CONSTRUCTION
75	75.1. CONSTRUCTION
76	76.1. CONSTRUCTION
77	77.1. CONSTRUCTION
78	78.1. CONSTRUCTION
79	79.1. CONSTRUCTION
80	80.1. CONSTRUCTION
81	81.1. CONSTRUCTION
82	82.1. CONSTRUCTION
83	83.1. CONSTRUCTION
84	84.1. CONSTRUCTION
85	85.1. CONSTRUCTION
86	86.1. CONSTRUCTION
87	87.1. CONSTRUCTION
88	88.1. CONSTRUCTION
89	89.1. CONSTRUCTION
90	90.1. CONSTRUCTION
91	91.1. CONSTRUCTION
92	92.1. CONSTRUCTION
93	93.1. CONSTRUCTION
94	94.1. CONSTRUCTION
95	95.1. CONSTRUCTION
96	96.1. CONSTRUCTION
97	97.1. CONSTRUCTION
98	98.1. CONSTRUCTION
99	99.1. CONSTRUCTION
100	100.1. CONSTRUCTION

Item No.	Description
101	101.1. CONSTRUCTION
102	102.1. CONSTRUCTION
103	103.1. CONSTRUCTION
104	104.1. CONSTRUCTION
105	105.1. CONSTRUCTION
106	106.1. CONSTRUCTION
107	107.1. CONSTRUCTION
108	108.1. CONSTRUCTION
109	109.1. CONSTRUCTION
110	110.1. CONSTRUCTION
111	111.1. CONSTRUCTION
112	112.1. CONSTRUCTION
113	113.1. CONSTRUCTION
114	114.1. CONSTRUCTION
115	115.1. CONSTRUCTION
116	116.1. CONSTRUCTION
117	117.1. CONSTRUCTION
118	118.1. CONSTRUCTION
119	119.1. CONSTRUCTION
120	120.1. CONSTRUCTION
121	121.1. CONSTRUCTION
122	122.1. CONSTRUCTION
123	123.1. CONSTRUCTION
124	124.1. CONSTRUCTION
125	125.1. CONSTRUCTION
126	126.1. CONSTRUCTION
127	127.1. CONSTRUCTION
128	128.1. CONSTRUCTION
129	129.1. CONSTRUCTION
130	130.1. CONSTRUCTION
131	131.1. CONSTRUCTION
132	132.1. CONSTRUCTION
133	133.1. CONSTRUCTION
134	134.1. CONSTRUCTION
135	135.1. CONSTRUCTION
136	136.1. CONSTRUCTION
137	137.1. CONSTRUCTION
138	138.1. CONSTRUCTION
139	139.1. CONSTRUCTION
140	140.1. CONSTRUCTION
141	141.1. CONSTRUCTION
142	142.1. CONSTRUCTION
143	143.1. CONSTRUCTION
144	144.1. CONSTRUCTION
145	145.1. CONSTRUCTION
146	146.1. CONSTRUCTION
147	147.1. CONSTRUCTION
148	148.1. CONSTRUCTION
149	149.1. CONSTRUCTION
150	150.1. CONSTRUCTION
151	151.1. CONSTRUCTION
152	152.1. CONSTRUCTION
153	153.1. CONSTRUCTION
154	154.1. CONSTRUCTION
155	155.1. CONSTRUCTION
156	156.1. CONSTRUCTION
157	157.1. CONSTRUCTION
158	158.1. CONSTRUCTION
159	159.1. CONSTRUCTION
160	160.1. CONSTRUCTION
161	161.1. CONSTRUCTION
162	162.1. CONSTRUCTION
163	163.1. CONSTRUCTION
164	164.1. CONSTRUCTION
165	165.1. CONSTRUCTION
166	166.1. CONSTRUCTION
167	167.1. CONSTRUCTION
168	168.1. CONSTRUCTION
169	169.1. CONSTRUCTION
170	170.1. CONSTRUCTION
171	171.1. CONSTRUCTION
172	172.1. CONSTRUCTION
173	173.1. CONSTRUCTION
174	174.1. CONSTRUCTION
175	175.1. CONSTRUCTION
176	176.1. CONSTRUCTION
177	177.1. CONSTRUCTION
178	178.1. CONSTRUCTION
179	179.1. CONSTRUCTION
180	180.1. CONSTRUCTION
181	181.1. CONSTRUCTION
182	182.1. CONSTRUCTION
183	183.1. CONSTRUCTION
184	184.1. CONSTRUCTION
185	185.1. CONSTRUCTION
186	186.1. CONSTRUCTION
187	187.1. CONSTRUCTION
188	188.1. CONSTRUCTION
189	189.1. CONSTRUCTION
190	190.1. CONSTRUCTION
191	191.1. CONSTRUCTION
192	192.1. CONSTRUCTION
193	193.1. CONSTRUCTION
194	194.1. CONSTRUCTION
195	195.1. CONSTRUCTION
196	196.1. CONSTRUCTION
197	197.1. CONSTRUCTION
198	198.1. CONSTRUCTION
199	199.1. CONSTRUCTION
200	200.1. CONSTRUCTION



PROJECT LOCATION
SCALE: N.T.S.



REVISION	DATE	BY	APP'D	REASON
1	10/21/16	WADE	APP'D	REVISION

RECORD DRAWING CLARIFICATION

☐ AS BUILT - CHANGES AS NOTED

☐ AS BUILT - NO CHANGES

NAME: _____ DATE: _____

SCALE: _____

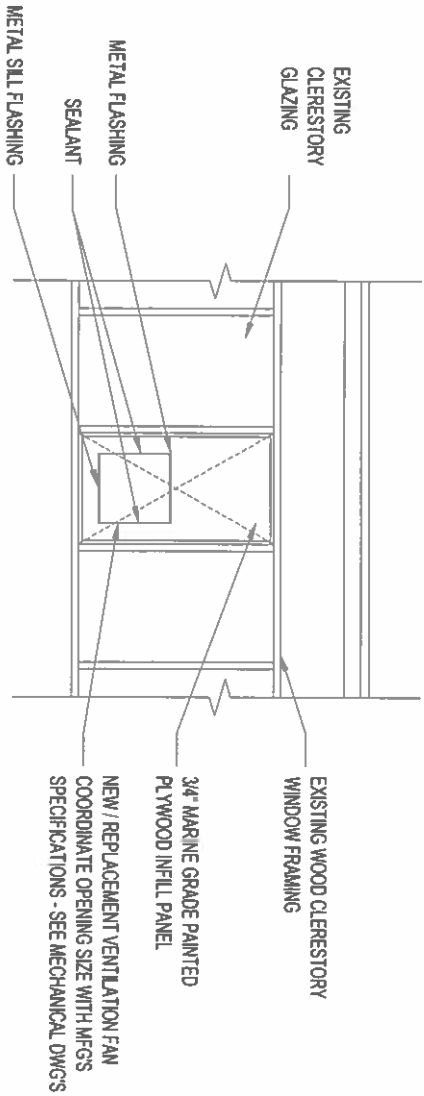
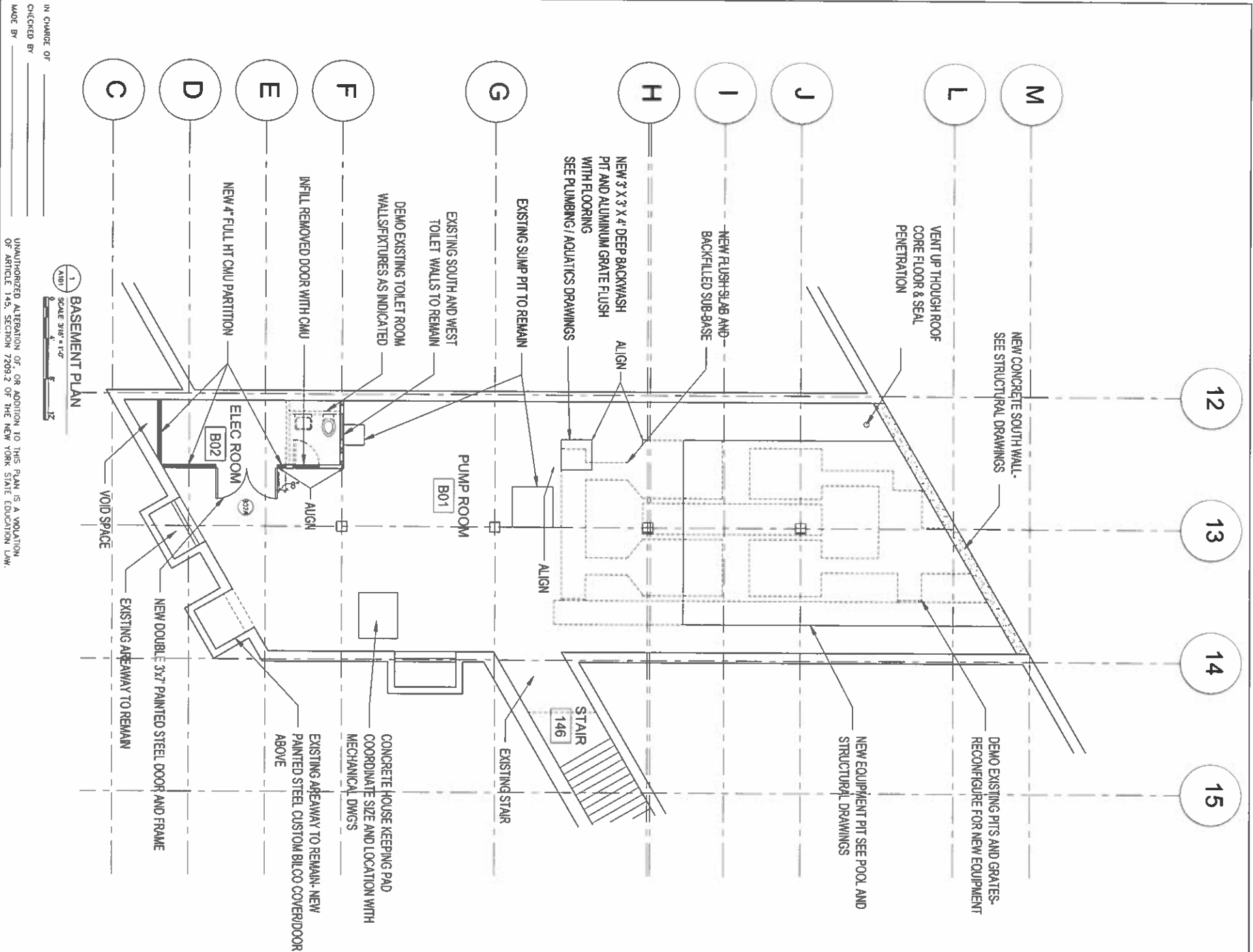
TITLE: _____

PROJECT COORDINATOR

WESTCHESTER COUNTY, NEW YORK
DEPARTMENT OF PUBLIC WORKS AND TRANSPORTATION
DIVISION OF ENGINEERING

SPRAIN RIDGE POOL MODERNIZATION
COVER SHEET

SHEET NO. 1 OF 122
DATE: 10/21/16
DWG FILE NO. 71-05-1-113



REVISION		DATE		MADE BY	APPROVED BY	REVISION
REVISION NUMBER		DATE		MADE BY	APPROVED BY	REVISION
RECORD DRAWING CERTIFICATION						
<input type="checkbox"/> AS BUILT - CHANGES AS NOTED						
<input type="checkbox"/> AS BUILT - NO CHANGES						
CONTRACTOR			PROJECT COORDINATOR			
NAME _____			NAME _____			
SIGNATURE _____			SIGNATURE _____			
TITLE _____			TITLE _____			
DATE _____			DATE _____			
WESTCHESTER COUNTY, NEW YORK			CONTRACT NUMBER			
DEPARTMENT OF PUBLIC WORKS AND TRANSPORTATION			07-549			
DIVISION OF ENGINEERING			SHEET NO. 19 OF 122			
SPRAIN RIDGE POOL MODERNIZATION			SCALE: AS NOTED			
BASEMENT PLAN			DATE: 8/26/16			
			DWG FILE NO. 71-05-A-131			
			RGT			

REVISIONS & CHANGES TO RECORD DRAWING

REVISION 1: 8/26/16

REVISION 2: 8/26/16

REVISION 3: 8/26/16

REVISION 4: 8/26/16

REVISION 5: 8/26/16

REVISION 6: 8/26/16

REVISION 7: 8/26/16

REVISION 8: 8/26/16

REVISION 9: 8/26/16

REVISION 10: 8/26/16

REVISION 11: 8/26/16

REVISION 12: 8/26/16

REVISION 13: 8/26/16

REVISION 14: 8/26/16

REVISION 15: 8/26/16

REVISION 16: 8/26/16

REVISION 17: 8/26/16

REVISION 18: 8/26/16

REVISION 19: 8/26/16

REVISION 20: 8/26/16

REVISION 21: 8/26/16

REVISION 22: 8/26/16

REVISION 23: 8/26/16

REVISION 24: 8/26/16

REVISION 25: 8/26/16

REVISION 26: 8/26/16

REVISION 27: 8/26/16

REVISION 28: 8/26/16

REVISION 29: 8/26/16

REVISION 30: 8/26/16

REVISION 31: 8/26/16

REVISION 32: 8/26/16

REVISION 33: 8/26/16

REVISION 34: 8/26/16

REVISION 35: 8/26/16

REVISION 36: 8/26/16

REVISION 37: 8/26/16

REVISION 38: 8/26/16

REVISION 39: 8/26/16

REVISION 40: 8/26/16

REVISION 41: 8/26/16

REVISION 42: 8/26/16

REVISION 43: 8/26/16

REVISION 44: 8/26/16

REVISION 45: 8/26/16

REVISION 46: 8/26/16

REVISION 47: 8/26/16

REVISION 48: 8/26/16

REVISION 49: 8/26/16

REVISION 50: 8/26/16

REVISION 51: 8/26/16

REVISION 52: 8/26/16

REVISION 53: 8/26/16

REVISION 54: 8/26/16

REVISION 55: 8/26/16

REVISION 56: 8/26/16

REVISION 57: 8/26/16

REVISION 58: 8/26/16

REVISION 59: 8/26/16

REVISION 60: 8/26/16

REVISION 61: 8/26/16

REVISION 62: 8/26/16

REVISION 63: 8/26/16

REVISION 64: 8/26/16

REVISION 65: 8/26/16

REVISION 66: 8/26/16

REVISION 67: 8/26/16

REVISION 68: 8/26/16

REVISION 69: 8/26/16

REVISION 70: 8/26/16

REVISION 71: 8/26/16

REVISION 72: 8/26/16

REVISION 73: 8/26/16

REVISION 74: 8/26/16

REVISION 75: 8/26/16

REVISION 76: 8/26/16

REVISION 77: 8/26/16

REVISION 78: 8/26/16

REVISION 79: 8/26/16

REVISION 80: 8/26/16

REVISION 81: 8/26/16

REVISION 82: 8/26/16

REVISION 83: 8/26/16

REVISION 84: 8/26/16

REVISION 85: 8/26/16

REVISION 86: 8/26/16

REVISION 87: 8/26/16

REVISION 88: 8/26/16

REVISION 89: 8/26/16

REVISION 90: 8/26/16

REVISION 91: 8/26/16

REVISION 92: 8/26/16

REVISION 93: 8/26/16

REVISION 94: 8/26/16

REVISION 95: 8/26/16

REVISION 96: 8/26/16

REVISION 97: 8/26/16

REVISION 98: 8/26/16

REVISION 99: 8/26/16

REVISION 100: 8/26/16

REVISION 101: 8/26/16

REVISION 102: 8/26/16

REVISION 103: 8/26/16

REVISION 104: 8/26/16

REVISION 105: 8/26/16

REVISION 106: 8/26/16

REVISION 107: 8/26/16

REVISION 108: 8/26/16

REVISION 109: 8/26/16

REVISION 110: 8/26/16

REVISION 111: 8/26/16

REVISION 112: 8/26/16

REVISION 113: 8/26/16

REVISION 114: 8/26/16

REVISION 115: 8/26/16

REVISION 116: 8/26/16

REVISION 117: 8/26/16

REVISION 118: 8/26/16

REVISION 119: 8/26/16

REVISION 120: 8/26/16

REVISION 121: 8/26/16

REVISION 122: 8/26/16

REVISION 123: 8/26/16

REVISION 124: 8/26/16

REVISION 125: 8/26/16

REVISION 126: 8/26/16

REVISION 127: 8/26/16

REVISION 128: 8/26/16

REVISION 129: 8/26/16

REVISION 130: 8/26/16

REVISION 131: 8/26/16

REVISION 132: 8/26/16

REVISION 133: 8/26/16

REVISION 134: 8/26/16

REVISION 135: 8/26/16

REVISION 136: 8/26/16

REVISION 137: 8/26/16

REVISION 138: 8/26/16

REVISION 139: 8/26/16

REVISION 140: 8/26/16

REVISION 141: 8/26/16

REVISION 142: 8/26/16

REVISION 143: 8/26/16

REVISION 144: 8/26/16

REVISION 145: 8/26/16

REVISION 146: 8/26/16

REVISION 147: 8/26/16

REVISION 148: 8/26/16

REVISION 149: 8/26/16

REVISION 150: 8/26/16

REVISION 151: 8/26/16

REVISION 152: 8/26/16

REVISION 153: 8/26/16

REVISION 154: 8/26/16

REVISION 155: 8/26/16

REVISION 156: 8/26/16

REVISION 157: 8/26/16

REVISION 158: 8/26/16

REVISION 159: 8/26/16

REVISION 160: 8/26/16

REVISION 161: 8/26/16

REVISION 162: 8/26/16

REVISION 163: 8/26/16

REVISION 164: 8/26/16

REVISION 165: 8/26/16

REVISION 166: 8/26/16

REVISION 167: 8/26/16

REVISION 168: 8/26/16

REVISION 169: 8/26/16

REVISION 170: 8/26/16

REVISION 171: 8/26/16

REVISION 172: 8/26/16

REVISION 173: 8/26/16

REVISION 174: 8/26/16

REVISION 175: 8/26/16

REVISION 176: 8/26/16

REVISION 177: 8/26/16

REVISION 178: 8/26/16

REVISION 179: 8/26/16

REVISION 180: 8/26/16

REVISION 181: 8/26/16

REVISION 182: 8/26/16

REVISION 183: 8/26/16

REVISION 184: 8/26/16

REVISION 185: 8/26/16

REVISION 186: 8/26/16

REVISION 187: 8/26/16

REVISION 188: 8/26/16

REVISION 189: 8/26/16

REVISION 190: 8/26/16

REVISION 191: 8/26/16

REVISION 192: 8/26/16

REVISION 193: 8/26/16

REVISION 194: 8/26/16

REVISION 195: 8/26/16

REVISION 196: 8/26/16

REVISION 197: 8/26/16

REVISION 198: 8/26/16

REVISION 199: 8/26/16

REVISION 200: 8/26/16

REVISION 201: 8/26/16

REVISION 202: 8/26/16

REVISION 203: 8/26/16

REVISION 204: 8/26/16

REVISION 205: 8/26/16

REVISION 206: 8/26/16

REVISION 207: 8/26/16

REVISION 208: 8/26/16

REVISION 209: 8/26/16

REVISION 210: 8/26/16

REVISION 211: 8/26/16

REVISION 212: 8/26/16

REVISION 213: 8/26/16

REVISION 214: 8/26/16

REVISION 215: 8/26/16

REVISION 216: 8/26/16

REVISION 217: 8/26/16

REVISION 218: 8/26/16

REVISION 219: 8/26/16

REVISION 220: 8/26/16

REVISION 221: 8/26/16

REVISION 222: 8/26/16

REVISION 223: 8/26/16

REVISION 224: 8/26/16

REVISION 225: 8/26/16

REVISION 226: 8/26/16

REVISION 227: 8/26/16

REVISION 228: 8/26/16

REVISION 229: 8/26/16

REVISION 230: 8/26/16

REVISION 231: 8/26/16

REVISION 232: 8/26/16

REVISION 233: 8/26/16

REVISION 234: 8/26/16

REVISION 235: 8/26/16

REVISION 236: 8/26/16

REVISION 237: 8/26/16

REVISION 238: 8/26/16

REVISION 239: 8/26/16

REVISION 240: 8/26/16

REVISION 241: 8/26/16

REVISION 242: 8/26/16

REVISION 243: 8/26/16

REVISION 244: 8/26/16

REVISION 245: 8/26/16

REVISION 246: 8/26/16

REVISION 247: 8/26/16

REVISION 248: 8/26/16

REVISION 249: 8/26/16

REVISION 250: 8/26/16

REVISION 251: 8/26/16

REVISION 252: 8/26/16

REVISION 253: 8/26/16

REVISION 254: 8/26/16

REVISION 255: 8/26/16

REVISION 256: 8/26/16

REVISION 257: 8/26/16

REVISION 258: 8/26/16

REVISION 259: 8/26/16

REVISION 260: 8/26/16

REVISION 261: 8/26/16

REVISION 262: 8/26/16

REVISION 263: 8/26/16

REVISION 264: 8/26/16

REVISION 265: 8/26/16

REVISION 266: 8/26/16

REVISION 267: 8/26/16

REVISION 268: 8/26/16

REVISION 269: 8/26/16

REVISION 270: 8/26/16

REVISION 271: 8/26/16

REVISION 272: 8/26/16

REVISION 273: 8/26/16

REVISION 274: 8/26/16

REVISION 275: 8/26/16

REVISION 276: 8/26/16

REVISION 277: 8/26/16

REVISION 278: 8/26/16

REVISION 279: 8/26/16

REVISION 280: 8/26/16

REVISION 281: 8/26/16

REVISION 282: 8/26/16

REVISION 283: 8/26/16

REVISION 284: 8/26/16

REVISION 285: 8/26/16

REVISION 286: 8/26/16

REVISION 287: 8/26/16

REVISION 288: 8/26/16

REVISION 289: 8/26/16

REVISION 290: 8/26/16

REVISION 291: 8/26/16

REVISION 292: 8/26/16

REVISION 293: 8/26/16

REVISION 294: 8/26/16

REVISION 295: 8/26/16

REVISION 296: 8/26/16

REVISION 297: 8/26/16

REVISION 298: 8/26/16

REVISION 299: 8/26/16

REVISION 300: 8/26/16

REVISION 301: 8/26/16

REVISION 302: 8/26/16

REVISION 303: 8/26/16

REVISION 304: 8/26/16

REVISION 305: 8/26/16

REVISION 306: 8/26/16

REVISION 307: 8/26/16

REVISION 308: 8/26/16

REVISION 309: 8/26/16

REVISION 310: 8/26/16

REVISION 311: 8/26/16

REVISION 312: 8/26/16

REVISION 313: 8/26/16

REVISION 314: 8/26/16

REVISION 315: 8/26/16

REVISION 316: 8/26/16

REVISION 317: 8/26/16

REVISION 318: 8/26/16

REVISION 319: 8/26/16

REVISION 320: 8/26/16

REVISION 321: 8/26/16

REVISION 322: 8/26/16

REVISION 323: 8/26/16

REVISION 324: 8/26/16

REVISION 325: 8/26/16

REVISION 326: 8/26/16

REVISION 327: 8/26/16

REVISION 328: 8/26/16

REVISION 329: 8/26/16

REVISION 330: 8/26/16

REVISION 331: 8/26/16

REVISION 332: 8/26/16

REVISION 333: 8/26/16

REVISION 334: 8/26/16

REVISION 335: 8/26/16

REVISION 336: 8/26/16

REVISION 337: 8/26/16

REVISION 338: 8/26/16

REVISION 339: 8/26/16

REVISION 340: 8/26/16

REVISION 341: 8/26/16

REVISION 342: 8/26/16

REVISION 343: 8/26/16

REVISION 344: 8/26/16

REVISION 345: 8/26/16

REVISION 346: 8/26/16

REVISION 347: 8/26/16

REVISION 348: 8/26/16

REVISION 349: 8/26/16

REVISION 350: 8/26/16

REVISION 351: 8/26/16

REVISION 352: 8/26/16

REVISION 353: 8/26/16

REVISION 354: 8/26/16

REVISION 355: 8/26/16

REVISION 356: 8/26/16

REVISION 357: 8/26/16

REVISION 358: 8/26/16

REVISION 359: 8/26/16

REVISION 360: 8/26/16

REVISION 361: 8/26/16

REVISION 362: 8/26/16

REVISION 363: 8/26/16

REVISION 364: 8/26/16

REVISION 365: 8/26/16

REVISION 366: 8/26/16

REVISION 367: 8/26/16

REVISION 368: 8/26/16

REVISION 369: 8/26/16

REVISION 370: 8/26/16

REVISION 371: 8/26/16

REVISION 372: 8/26/16

REVISION 373: 8/26/16

REVISION 374: 8/26/16

REVISION 375: 8/26/16

REVISION 376: 8/26/16

REVISION 377: 8/26/16

REVISION 378: 8/26/16

REVISION 379: 8/26/16

REVISION 380: 8/26/16

REVISION 381: 8/26/16

REVISION 382: 8/26/16

REVISION 383: 8/26/16

REVISION 384: 8/26/16

REVISION 385: 8/26/16

REVISION 386: 8/26/16

REVISION 387: 8/26/16

REVISION 388: 8/26/16

REVISION 389: 8/26/16

REVISION 390: 8/26/16

REVISION 391: 8/26/16

REVISION 392: 8/26/16

REVISION 393: 8/26/16

REVISION 394: 8/26/16

REVISION 395: 8/26/16

REVISION 396: 8/26/16

REVISION 397: 8/26/16

REVISION 398: 8/26/16

REVISION 399: 8/26/16

REVISION 400: 8/26/16

REVISION 401: 8/26/16

REVISION 402: 8/26/16

REVISION 403: 8/26/16

REVISION 404: 8/26/16

REVISION 405: 8/26/16

REVISION 406: 8/26/16

REVISION 407: 8/26/16

REVISION 408: 8/26/16

REVISION 409: 8/26/16

REVISION 410: 8/26/16

REVISION 411: 8/26/16

REVISION 412: 8/26/16

REVISION 413: 8/26/16

REVISION 414: 8/26/16

REVISION 415: 8/26/16

REVISION 416: 8/26/16

REVISION 417: 8/26/16

REVISION 418: 8/26/16

REVISION 419: 8/26/16

REVISION 420: 8/26/16

REVISION 421: 8/26/16

REVISION 422: 8/26/16

REVISION 423: 8/26/16

REVISION 424: 8/26/16

REVISION 425: 8/26/16

REVISION 426: 8/26/16

REVISION 427: 8/26/16

REVISION 428: 8/26/16

REVISION 429: 8/26/16

REVISION 430: 8/26/16

REVISION 431: 8/26/16

REVISION 432: 8/26/16

REVISION 433: 8/26/16

REVISION 434: 8/26/16

REVISION 435: 8/26/16

REVISION 436: 8/26/16

REVISION 437: 8/26/16

REVISION 438: 8/26/16

REVISION 439: 8/26/16

REVISION 440: 8/26/16

REVISION 441: 8/26/16

REVISION 442: 8/26/16

REVISION 443: 8/26/16

REVISION 444: 8/26/16

REVISION 445: 8/26/16

REVISION 446: 8/26/16

REVISION 447: 8/26/16

REVISION 448: 8/26/16

REVISION 449: 8/26/16

REVISION 450: 8/26/16

REVISION 451: 8/26/16

REVISION 452: 8/26/16

REVISION 453: 8/26/16

REVISION 454: 8/26/16

REVISION 455: 8/26/16

REVISION 456: 8/26/16

REVISION 457: 8/26/16

REVISION 458: 8/26/16

REVISION 459: 8/26/16

REVISION 460: 8/26/16

REVISION 461: 8/26/16

REVISION 462: 8/26/16

REVISION 463: 8/26/16

REVISION 464: 8/26/16

REVISION 465: 8/26/16

REVISION 466: 8/26/16

REVISION 467: 8/26/16

REVISION 468: 8/26/16

REVISION 469: 8/26/16

REVISION 470: 8/26/16

REVISION 471: 8/26/16

REVISION 472: 8/26/16

REVISION 473: 8/26/16

REVISION 474: 8/26/16

REVISION 475: 8/26/16

REVISION 476: 8/26/16

REVISION 477: 8/26/16

REVISION 478: 8/26/16

REVISION 479: 8/26/16

REVISION 480: 8/26/16

REVISION 481: 8/26/16

REVISION 482: 8/26/16

REVISION 483: 8/26/16

REVISION 484: 8/26/16

REVISION 485: 8/26/16

REVISION 486: 8/26/16

REVISION 487: 8/26/16

REVISION 488: 8/26/16

REVISION 489: 8/26/16

REVISION 490: 8/26/16

REVISION 491: 8/26/16

REVISION 492: 8/26/16

REVISION 493: 8/26/16

REVISION 494: 8/26/16

REVISION 495: 8/26/16

REVISION 496: 8/26/16

REVISION 497: 8/26/16

REVISION 498: 8/26/16

REVISION 499: 8/26/16

REVISION 500: 8/26/16

REVISION 501: 8/26/16

REVISION 502: 8/26/16

REVISION 503: 8/26/16

REVISION 504: 8/26/16

REVISION 505: 8/26/16

REVISION 506: 8/26/16

REVISION 507: 8/26/16

REVISION 508: 8/26/16

REVISION 509: 8/26/16

REVISION 510: 8/26/16

REVISION 511: 8/26/16

REVISION 512: 8/26/16

REVISION 513: 8/26/16

REVISION 514: 8/26/16

REVISION 515: 8/26/16

REVISION 516: 8/26/16

REVISION 517: 8/26/16

REVISION 518: 8/26/16

REVISION 519: 8/26/16

REVISION 520: 8/26/16

REVISION 521: 8/26/16

REVISION 522: 8/26/16

REVISION 523: 8/26/16

REVISION 524: 8/26/16

REVISION 525: 8/26/16

REVISION 526: 8/26/16

REVISION 527: 8/26/16

REVISION 528: 8/26/16

REVISION 529: 8/26/16

REVISION 530: 8/26/16

REVISION 531: 8/26/16

REVISION 532: 8/26/16

REVISION 533: 8/26/16

REVISION 534: 8/26/16

REVISION 535: 8/26/16

REVISION 536: 8/26/16

REVISION 537: 8/26/16

REVISION 538: 8/26/16

REVISION 539: 8/26/16

REVISION 540: 8/26/16

REVISION 541: 8/26/16

REVISION 542: 8/26/16

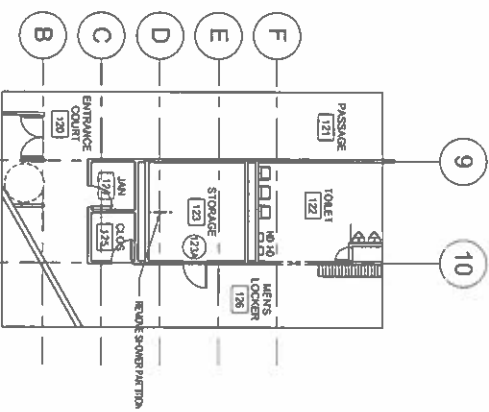
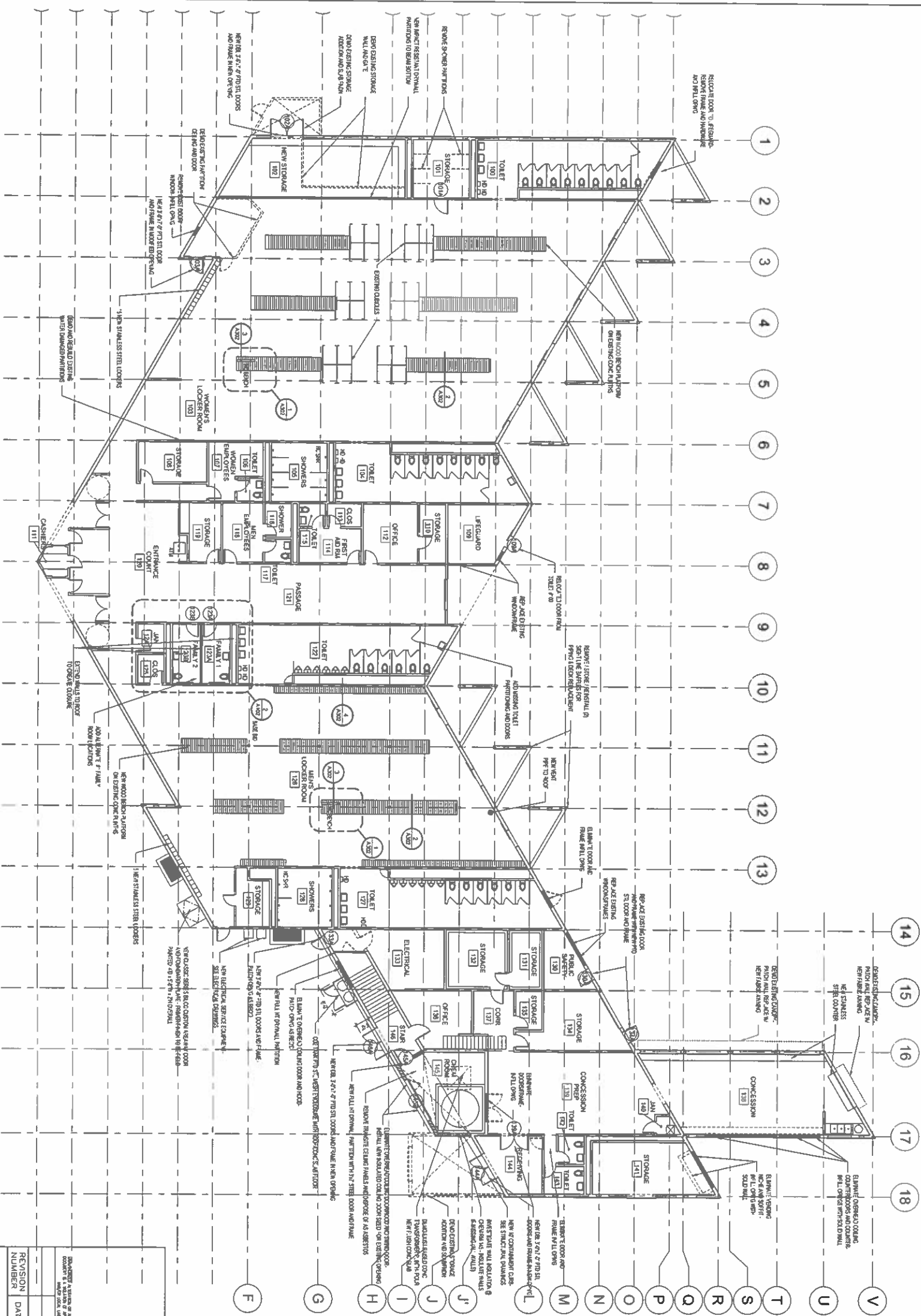
REVISION 543: 8/26/16

REVISION 544: 8/26/16



IN CHARGE OF _____
 CHECKED BY _____
 MADE BY _____

UNAUTHORIZED ALTERATION OF, OR ADDITION TO THIS PLAN IS A VIOLATION OF ARTICLE 145, SECTION 7209.2 OF THE NEW YORK STATE EDUCATION LAW.



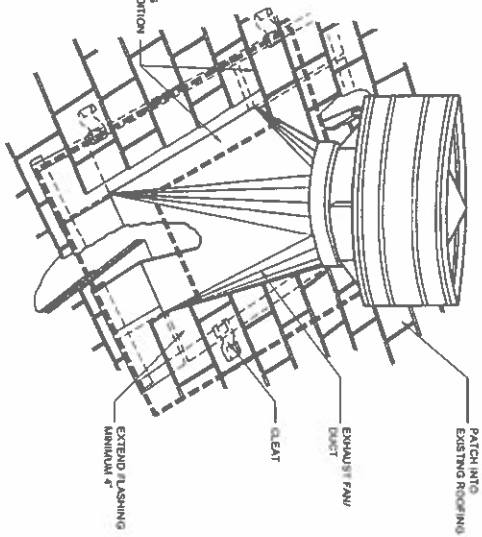
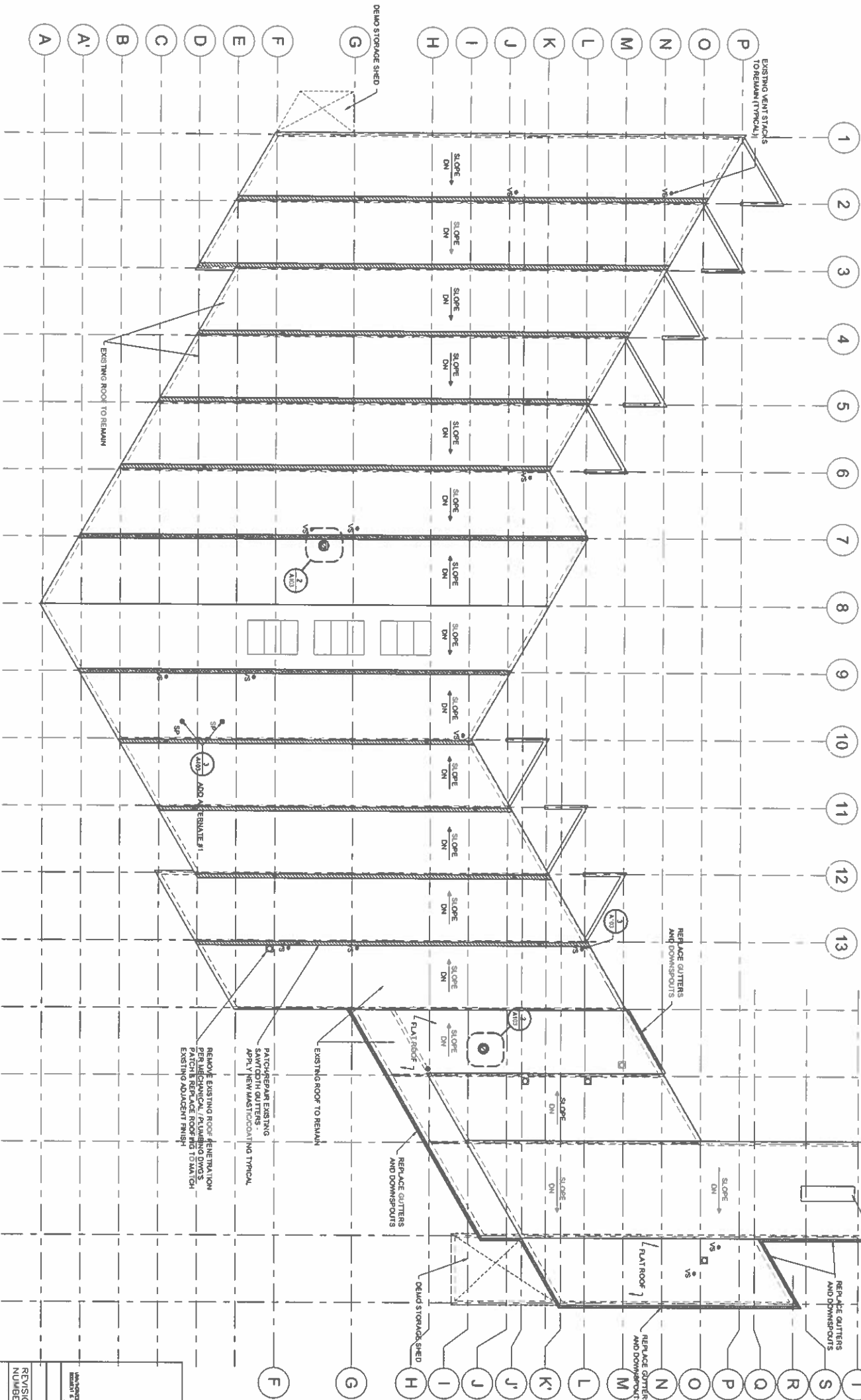
- [illegible]

[illegible]

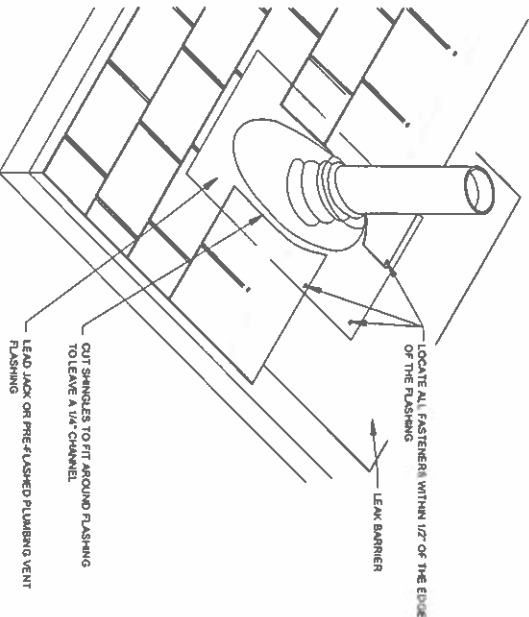
CTA
 18 Winthrop Circle, PO Box 5289 • Albany, NY 12203-0289
 New! (518) 434-4300 • www.thecongress.com

NAME _____		PROJECT COORDINATOR	
SIGNATURE _____		SIGNATURE _____	
TITLE _____	DATE _____	TITLE _____	DATE _____
CONTRACTOR WESTCHESTER COUNTY, NEW YORK DEPARTMENT OF PUBLIC WORKS AND TRANSPORTATION		CONTRACT NUMBER 07-549 SHEET NUMBER A-102	
DIVISION OF ENGINEERING		SHEET NO. 20 OF 122	
SPRAIN RIDGE POOL MODERNIZATION		SCALE: AS NOTED DATE: 8/26/16	
GROUND FLOOR PLAN		DWG FILE NO. _____ REV. _____	

KEY	
	ROOF DRAIN
	FAN CURB
	VENT STACK
	SKYLIGHT



2 SLOPED ROOF DETAIL / FLAT ROOF SIM
1/8\"/>



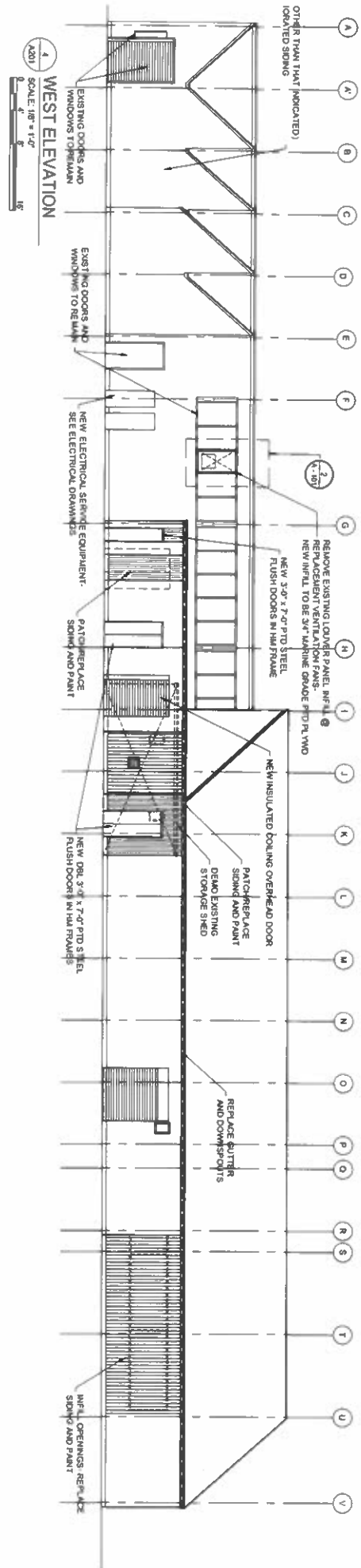
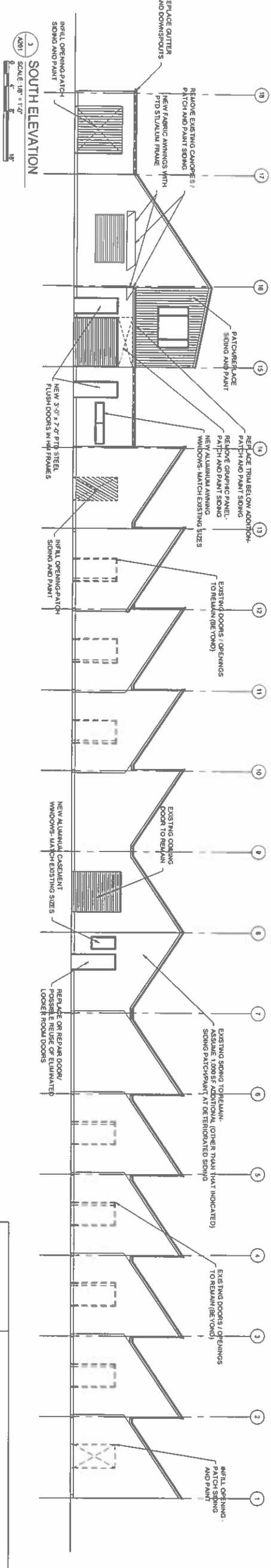
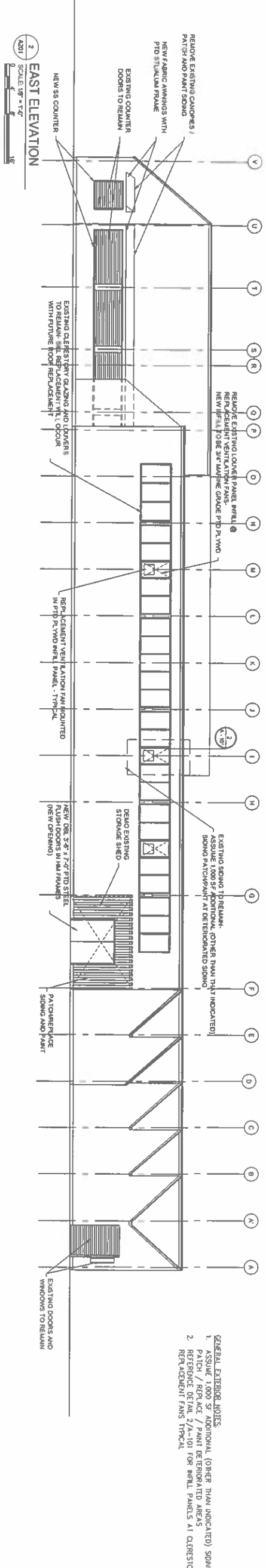
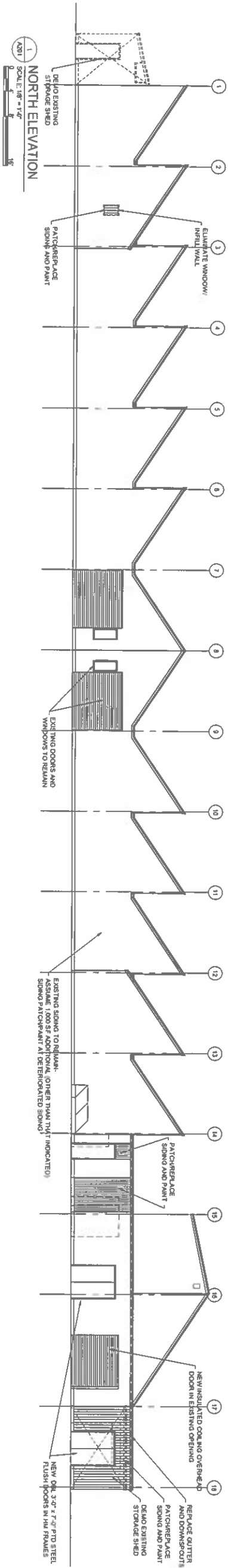
3 VENT STACK DETAIL
1/8\"/>

1 ROOF PLAN
1/8\"/>


IN CHARGE OF _____
CHECKED BY _____
MADE BY _____

UNAUTHORIZED ALTERATION OF OR ADDITION TO THIS PLAN IS A VIOLATION
OF ARTICLE 146, SECTION 2203.2 OF THE NEW YORK STATE EDUCATION LAW.

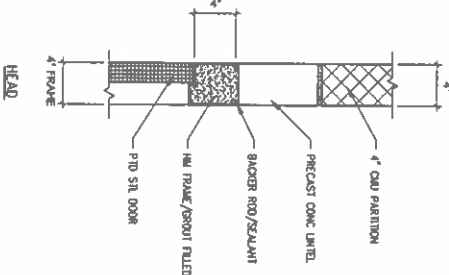
 WESTCHESTER COUNTY, NEW YORK DIVISION OF ENGINEERING SPRAIN RIDGE POOL MODERNIZATION ROOF PLAN		<p>REVISION</p> <table><thead><tr><th>REVISION NUMBER</th><th>DATE</th><th>MADE BY</th><th>APP'D BY</th><th>REVISION</th></tr></thead><tbody><tr><td> </td><td> </td><td> </td><td> </td><td> </td></tr></tbody></table> <p>RECORD DRAWING CERTIFICATION</p> <p><input type="checkbox"/> AS BUILT - CHANGES AS NOTED <input type="checkbox"/> AS BUILT - NO CHANGES</p> <p>CONTRACTOR</p> <table><tr><td>NAME _____</td><td>SIGNATURE _____</td></tr><tr><td>TITLE _____</td><td>DATE _____</td></tr></table> <p>PROJECT COORDINATOR</p> <table><tr><td>NAME _____</td><td>SIGNATURE _____</td></tr><tr><td>TITLE _____</td><td>DATE _____</td></tr></table> <p>CONTRACT NUMBER 07-549 SHEET NUMBER A-103 SHEET NO. 21 OF 122 SCALE: AS NOTED DATE: 8/26/16 DWG FILE NO. 71-05-A-133</p>		REVISION NUMBER	DATE	MADE BY	APP'D BY	REVISION						NAME _____	SIGNATURE _____	TITLE _____	DATE _____	NAME _____	SIGNATURE _____	TITLE _____	DATE _____
REVISION NUMBER	DATE	MADE BY	APP'D BY	REVISION																	
NAME _____	SIGNATURE _____																				
TITLE _____	DATE _____																				
NAME _____	SIGNATURE _____																				
TITLE _____	DATE _____																				



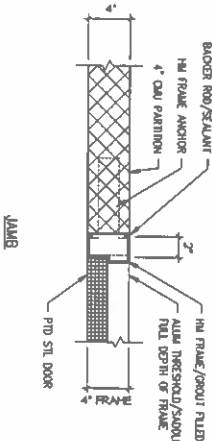
GENERAL EXTERIOR NOTES:
1. ASSUME 1,000 SF ADDITIONAL (OTHER THAN INDICATED) SIDING TO PATCH / REPLACE / PAINT DETEIORATED AREAS
2. REFERENCE DETAIL 2/A-101 FOR INFILL PANELS AT CLOSETORY REPLACEMENT FANS TYPICAL

 18 Westing Court, PO Box 5208 • Albany, NY 12205-0208 Map: ©1914-2016 • www.cha-engineering.com		RECORD DRAWING CERTIFICATION	
REVISION NUMBER	DATE	MADE BY	APP'D BY
AS BUILT - CHANGES AS NOTED			
CONTRACTOR		PROJECT COORDINATOR	
NAME	SIGNATURE	NAME	SIGNATURE
TITLE	DATE	TITLE	DATE
WESTCHESTER COUNTY, NEW YORK DEPARTMENT OF PUBLIC WORKS AND TRANSPORTATION DIVISION OF ENGINEERING			
SHEET NO. 22 OF 122		SHEET NUMBER 07-549	
SCALE: AS NOTED		DATE: 8/26/16	
DWG FILE NO. 71-05-A-134		REV. 0	

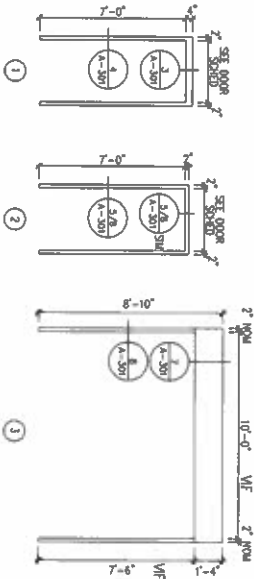
DOOR SCHEDULE-SOUTH BUILDING							
DOOR	DOOR TYPE	DOOR SIZE WxHxD	DOOR MATERIAL	FRAME TYPE	FRAME MATERIAL	HARDWARE SET	REMARKS
B02A	A	(2) 3'-0"x7'-0"	STL/P/D	1	HA/P/D	---	3
101A	A	3'-0"x7'-0"	STL/P/D	2	HA/P/D	---	1
102A	A	(2) 3'-6"x7'-0"	STL/P/D	2	HA/P/D	---	6
103A	A	3'-0"x7'-0"	STL/P/D	2	HA/P/D	---	2
104A	---	EXISTING	WD/P/D	EXIST	EXIST	---	---
123A	A	3'-0"x7'-0"	STL/P/D	2	HA/P/D	ALUM	3
123B	A	3'-0"x7'-0"	STL/P/D	2	HA/P/D	ALUM	3
130A	A	3'-0"x7'-0"	STL/P/D	2	HA/P/D	ALUM	2
131A	A	3'-0"x7'-0"	STL/P/D	2	STL/P/D	ALUM	2
134A	A	3'-0"x7'-0"	STL/P/D	2	HA/P/D	ALUM	1
139A	A	(2) 3'-0"x7'-0"	STL/P/D	2	HA/P/D	ALUM	5
144A	A	(2) 3'-0"x7'-0"	STL/P/D	2	HA/P/D	ALUM	6
145A	A	3'-0"x7'-0"	STL/P/D	2	HA/P/D	---	2
145B	B	7'-6"x10'-0"	STL/P/D	3	STL/P/D	---	---
146A	A	(2) 3'-6"x7'-0"	STL/P/D	2	HA/P/D	ALUM	6
							INSULATED DOOR COOLING OVERHEAD (INSULATED)



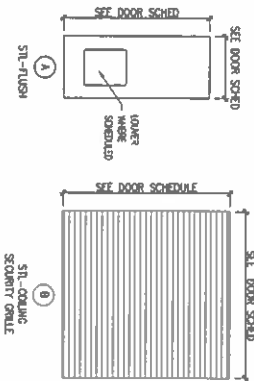
3 BASEMENT DOOR DETAILS
SCALE: 1 1/2" = 1'-0"
ASB/



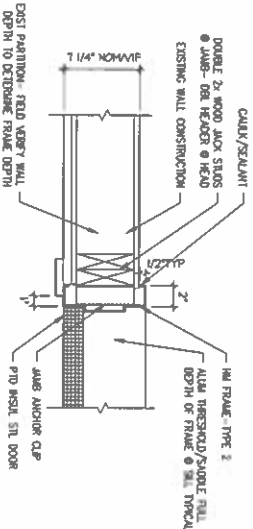
4 BASEMENT DOOR DETAILS
SCALE: 1 1/2" = 1'-0"
ASB/



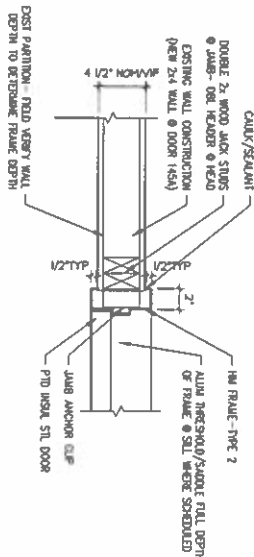
1 FRAME TYPES
SCALE: 1 1/2" = 1'-0"
ASB/



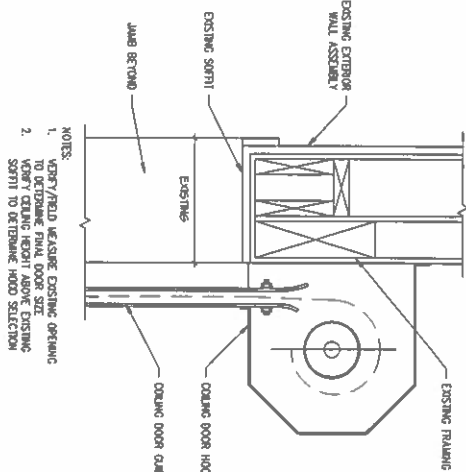
2 DOOR TYPES
SCALE: 1 1/2" = 1'-0"
ASB/



5 TYP EXT DOOR DETAIL-JAMB/HEAD SIM
SCALE: 1 1/2" = 1'-0"
ASB/

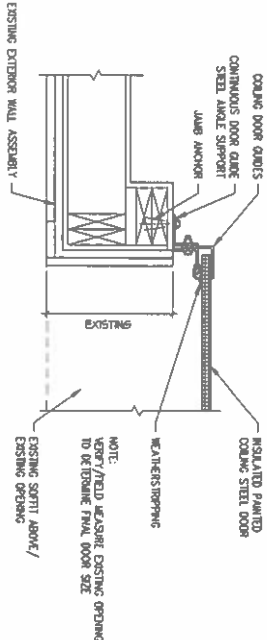


6 TYP INT DOOR DETAIL-JAMB/HEAD SIM
SCALE: 1 1/2" = 1'-0"
ASB/



NOTES:
1. VERIFY/FIELD MEASURE EXISTING OPENING
TO DETERMINE FINAL DOOR SIZE
2. VERIFY COLLING HOOD ABOVE EXISTING
SILL TO DETERMINE HOOD SELECTION

7 COLLING OVERHEAD DOOR DETAIL-HEAD
SCALE: 1 1/2" = 1'-0"
ASB/

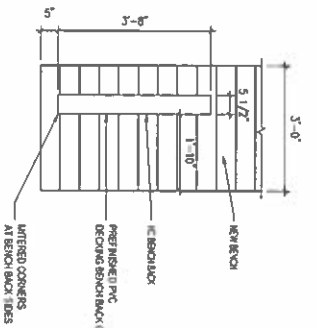


8 COLLING OVERHEAD DOOR DETAIL-JAMB
SCALE: 1 1/2" = 1'-0"
ASB/

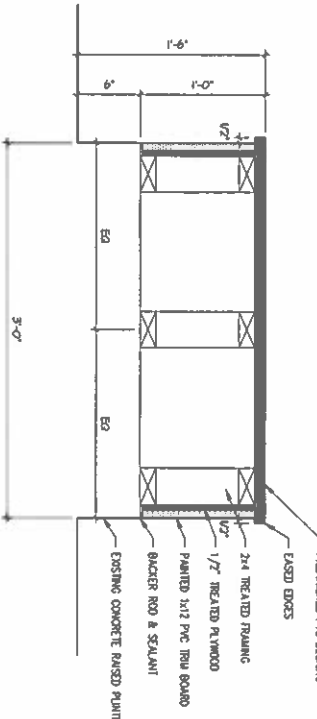
REVISION		RECORD DRAWING CERTIFICATION		PROJECT COORDINATOR	
REVISION NUMBER	DATE	MADE BY	APP'D BY	NAME	SIGNATURE
				NAME	SIGNATURE
				TITLE	TITLE
				DATE	DATE
				CONTRACTOR	
				WESTCHESTER COUNTY, NEW YORK	
				DEPARTMENT OF PUBLIC WORKS AND TRANSPORTATION	
				DIVISION OF ENGINEERING	
				SPRAIN RIDGE POOL MODERNIZATION	
				DOOR SCHEDULE AND DETAILS	
				SCALE: AS NOTED	
				DATE: 8/26/16	
				DWG FILE NO.	
				71-05-A-135	
				8/	

FINISH SCHEDULE					
ROOM #	ROOM NAME	FLOOR	BASE	WALLS	CEILING
801	PUMP ROOM	CONC/SEALER	---	EXIST/PT	PAINT WALLS & CIG
802	QEC ROOM	CONC/SEALER	---	CONC/PT	EXPOSED
100	TOILET	EXIST/CELAN	EXIST/PT	EXIST/PT	PAINT WALLS & CIG
101	STORAGE	EXIST	EXIST	EXIST	---
102	STORAGE	CONC/SEALER	EXIST/PT	EXIST	---
103	WOMEN'S LOCKER ROOM	CONC/SEALER	8" @ NEW	EXIST/PT	EXIST
104	TOILET	EXIST/CELAN	8" @ NEW	EXIST/PT	EXIST
105	SHOWERS	EXIST/CELAN	EXIST/CELAN	EXIST/CELAN	EXIST
106	TOILET	EXIST/CELAN	EXIST/CELAN	EXIST	---
107	WOMEN DRESSING ROOM	CONC/SEALER	EXIST	EXIST	---
108	STORAGE	CONC/SEALER	EXIST	EXIST	---
109	UTRIGUARD	CONC/SEALER	EXIST	EXIST	---
110	STORAGE	CONC/SEALER	EXIST	EXIST	---
111	CASINERS	CONC/SEALER	EXIST	EXIST	EXIST
112	OFFICE	CONC/SEALER	EXIST	EXIST	EXIST
113	CLONSET	CONC/SEALER	EXIST	EXIST	EXIST
114	FIRST AID ROOM	CONC/SEALER	EXIST	EXIST	EXIST
115	TOILET	EXIST/CELAN	EXIST/CELAN	EXIST	EXIST
116	SHOWER	EXIST/CELAN	EXIST/CELAN	EXIST	---
117	TOILET	EXIST/CELAN	EXIST/CELAN	EXIST	---
118	WOMEN DRESSING ROOM	CONC/SEALER	EXIST	EXIST	---
119	STORAGE	CONC/SEALER	EXIST	EXIST	---
120	CHURCH COOLIT	CONC/SEALER	EXIST	EXIST	EXIST
121	PASSAGE	CONC/SEALER	EXIST	EXIST	EXIST
122	TOILET	EXIST/CELAN	EXIST/CELAN	EXIST	EXIST
123	STORAGE	EXIST	EXIST	EXIST	EXIST

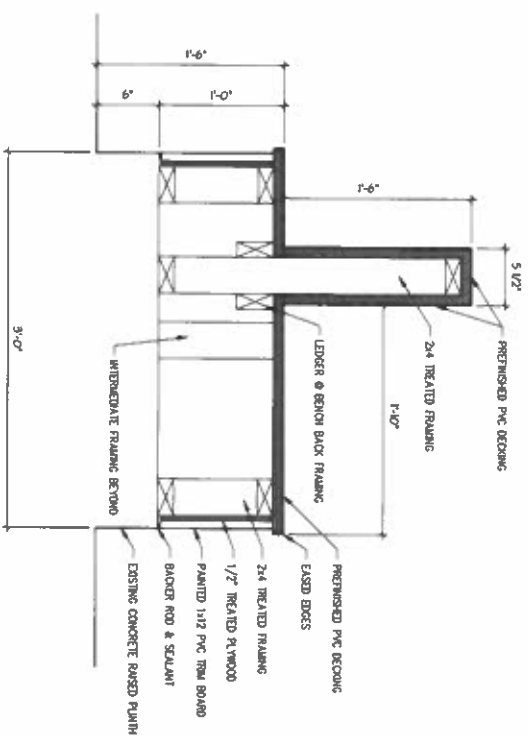
FINISH SCHEDULE					
ROOM #	ROOM NAME	FLOOR	BASE	WALLS	CEILING
123A	FAMILY 1 (400 ALTERNATE #1)	EXIST/PAINT	EXIST/CELAN	EXIST/PAINT	EXIST
123B	FAMILY 2 (400 ALTERNATE #1)	EXIST/PAINT	EXIST/CELAN	EXIST/PAINT	EXIST
124	JANITOR	CONC/SEALER	EXIST	EXIST	EXIST
125	CLONSET	EXIST	EXIST	EXIST	EXIST
126	WOMEN'S LOCKER ROOM	CONC/SEALER	EXIST	EXIST	EXIST
127	TOILET	EXIST/CELAN	EXIST/CELAN	EXIST/CELAN	EXIST
128	SHOWERS	EXIST/CELAN	EXIST/CELAN	EXIST/CELAN	EXIST
129	STORAGE	EXIST	EXIST	EXIST	EXIST
130	PAINT SAFETY	CONC/SEALER	EXIST	EXIST	EXIST
131	STORAGE	---	---	---	---
132	STORAGE	---	---	---	---
133	ELECTRICAL	EXIST	EXIST	EXIST	EXIST
134	STORAGE	CONC/SEALER	EXIST	EXIST	EXIST
135	STORAGE	---	---	---	---
136	OFFICE	---	---	---	---
137	CORRIDOR	---	---	---	---
138	CONCESSION	---	---	---	---
139	CONCESSION	---	---	---	---
140	JANITOR	---	---	---	---
141	STORAGE	---	---	---	---
142	TOILET	---	---	---	---
143	TOILET	---	---	---	---
144	RECEIVING	---	---	---	---
145	OVER ROOM	EXIST	EXIST	EXIST	EXIST
146	STAIR	EXIST	EXIST	EXIST	EXIST



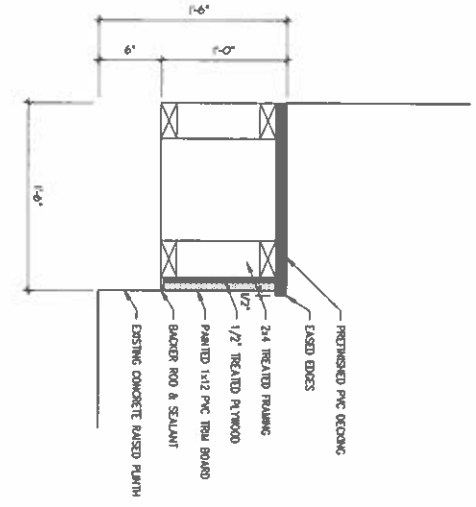
1 HC BENCH BACK PLAN DETAIL
SCALE 1/2" = 1'-0"



2 TYP BENCH DETAIL
SCALE 1 1/2" = 1'-0"



3 HC BENCH BACK DETAIL
SCALE 1 1/2" = 1'-0"



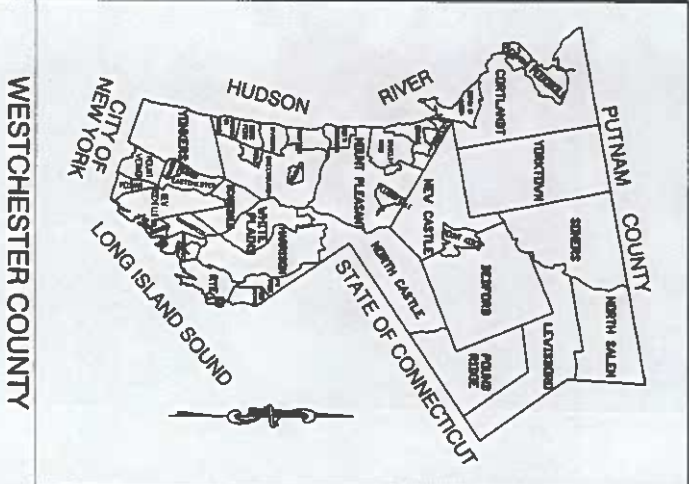
4 WALL BENCH DETAIL
SCALE 1 1/2" = 1'-0"

- GENERAL NOTES:
1. CLEAN EXISTING WOOD SLOPED CEILING
 2. PAINT NEW WORK ONLY EXCEPT WHERE SCHEDULED
 3. PAINT NEW WORK AT CONCESSION
 4. PAINT NEW WORK AT CONCESSION
 5. PAINT NEW WORK AT CONCESSION
 6. PAINT NEW WORK AT CONCESSION
 7. PAINT NEW WORK AT CONCESSION
 8. INVENTORY EXISTING BASES FOR MISSING PIECES. INSTALL MATCHING MISSING COMPONENTS
 9. PAINT COLORS TO MATCH SIMILAR ADJACENT MATERIALS/COLORS

IN CHARGE OF _____
CHECKED BY _____
MADE BY _____

UNAUTHORIZED ALTERATION OF OR ADDITION TO THIS PLAN IS A VIOLATION
OF ARTICLE 145, SECTION 7209.2 OF THE NEW YORK STATE EDUCATION LAW.

MADE _____		MADE _____	
SIGNATURE _____		SIGNATURE _____	
TITLE _____		TITLE _____	
DATE _____		DATE _____	
CONTRACTOR		PROJECT COORDINATOR	
WESTCHESTER COUNTY, NEW YORK		DIVISION OF ENGINEERING	
DEPARTMENT OF PUBLIC WORKS AND TRANSPORTATION		SPRAIN RIDGE POOL MODERNIZATION	
FINISH SCHEDULE AND DETAILS		FINISH SCHEDULE AND DETAILS	
REVISION		REVISION	
REVISION NUMBER	DATE	MADE BY	APPROVED BY
RECORD DRAWING CERTIFICATION			
<input type="checkbox"/> AS BUILT - CHANGES AS NOTED			
<input type="checkbox"/> AS BUILT - NO CHANGES			
SCALE: AS NOTED			
DATE: 8/26/16			
DRAW FILE NO. 71-05-A-136			
REV. 0			



WESTCHESTER COUNTY

Westchester
gov.com

WESTCHESTER COUNTY, NEW YORK
DEPARTMENT OF PUBLIC WORKS AND TRANSPORTATION
DIVISION OF ENGINEERING
CONTRACT No. 17-544
COMPETITION POOL RECONSTRUCTION
SPRAIN RIDGE PARK
YONKERS, NEW YORK

BID & CONSTRUCTION DOCUMENTS SPRAIN RIDGE PARK PHASE 2 CONSTRUCTION



File: V:\PROJECTS\ANY\K4\33633\CA00\T-1 COVER SHEET.DWG
Saved: 2/27/2018 11:57:58 AM Plotted: 2/27/2018 11:58:10 AM User: Calhoun, Matt

IN CHARGE OF _____
CHECKED BY _____
MADE BY _____

UNAUTHORIZED ALTERATION OF OR ADDITION TO THIS PLAN IS A VIOLATION
OF ARTICLE 145, SECTION 2209.2 OF THE NEW YORK STATE EDUCATION LAW.

DESIGNED BY <i>Joseph J. Jacobelli, Jr., P.E.</i> FIRST DEPUTY COMMISSIONER DEPARTMENT OF PUBLIC WORKS AND TRANSPORTATION	DATE 01/11/18	REVIEWED BY <i>Kathleen O'Connor</i> COMMISSIONER DEPARTMENT OF PUBLIC WORKS AND TRANSPORTATION	DATE 01/11/18	APPROVED BY <i>Michael J. O'Connell, Jr., P.E.</i> COMMISSIONER DEPARTMENT OF PUBLIC WORKS AND TRANSPORTATION	DATE 01/11/18
---	------------------	---	------------------	---	------------------



01/11/18		01/11/18	
4/13/18		JPH	
ISSUED FOR BID		REVISION	
REVISION NUMBER		DATE	
BY		BY	
AS BUILT - CHANGES AS NOTED		AS BUILT - NO CHANGES	
CONTRACTOR		PROJECT COORDINATOR	
NAME _____		NAME _____	
SIGNATURE _____		SIGNATURE _____	
TITLE _____		TITLE _____	
DATE _____		DATE _____	
WESTCHESTER COUNTY, NEW YORK		SHEET NO. 1 OF 83	
DEPARTMENT OF PUBLIC WORKS AND TRANSPORTATION		SHEET NO. 17-544	
DIVISION OF ENGINEERING		SHEET NO. T-1	
COMPETITION POOL RECONSTRUCTION		SCALE AS NOTED	
COVER SHEET		DATE 4/13/18	
DW FILE NO. 71-05-T-235-0		0	

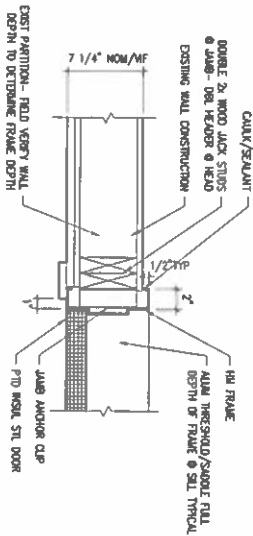


- 1 NEW DOORS - SEE TO SHEET A-301
- 2 NEW WALLS TO BE CONSTRUCTED OF THE SAME MATERIALS AS THE EXISTING ALUMINUM WALLS
- 3 ALUM RIBBON FACE OF NEW WALL 1711
- 4 TOP OF NEW WALL TO ALIGN WITH TOP OF EXISTING WALL OF EXISTING WALL 171
- 5 NEW ALUM WALLS AT BOTH ENDS OF THE DOORS TO BE CONSTRUCTED OF THE SAME MATERIALS AS THE EXISTING ALUM WALLS. THE PROJECT SHALL TO REMOVE THE COAT OF PAINT FROM TWO COATS OF FRESH PAINT TO MATCH COATING
- 6 REPLACE EXISTING DOORING DOOR
- 7 NEW ALUM WALLS AT BOTH ENDS OF THE DOOR, THE DOOR SHALL BE CENTER IN THE EXISTING OPENING
- 8 GLASS AND SEAL, TIEBA COATING FLOORS AND BASE
- 9 NEW DOORS
- 10 NEW WALLS AND BRICK PLASTERING AS REQUIRED AND WITH THE EXISTING SEALED CONCRETE FLOOR AND BASE. THE EXISTING REINFORCEMENT, THE OTHER SHALL SELECT THE COLOR

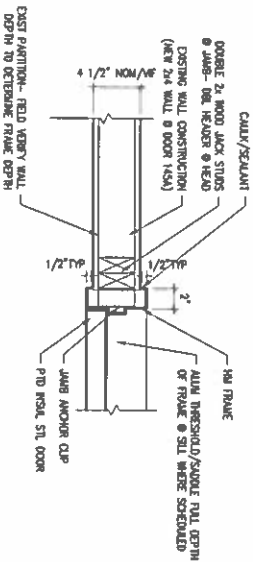
- 1 THE OWNER SHALL PROVIDE ALL STUPE AS REQUIRED.
- 2 THE GENERAL CONTRACTOR SHALL PATCH ALL EXISTING CONSTRUCTION IN THE AREA WHERE NEW WORK HAS BEEN PERFORMED.

[illegible]

			
NEW YORK STATE DEPARTMENT OF TRANSPORTATION DIVISION OF ENGINEERING		1190 Main Street, Albany, NY 12242-0001 Phone: 518-487-4000 www.dot.ny.gov	
REVISION NUMBER 0	DATE 4/13/18	MADE BY MS	APPROVED BY JPH
		DESIGNED FOR BMD	
		REVISION	
NAME _____ SQUARE _____ DATE _____		NAME _____ SQUARE _____ DATE _____	
CONTRACTOR WESTCHESTER COUNTY, NEW YORK DEPARTMENT OF PUBLIC WORKS AND TRANSPORTATION DIVISION OF ENGINEERING		PROJECT COORDINATOR	
<input type="checkbox"/> AS BUILT - CHANGES AS NOTED <input type="checkbox"/> AS BUILT - NO CHANGES			
SHEET NUMBER 11-044	CONTRACT NUMBER	SHEET NUMBER A-101	SCALE: AS NOTED DATE: 4/13/2018 SHEET NO. 71-05-A-250
COMPETITION POOL RECONSTRUCTION FLOOR PLANS		10	



1
ASB1
EXTERIOR DOOR DETAIL - JAMB / HEAD
SCALE 1/8\"/>



2
ASB1
INTERIOR DOOR DETAIL - JAMB / HEAD
SCALE 1/8\"/>

SPECIFICATION SECTION 081113 HOLLOW METAL DOORS AND FRAMES
MANUFACTURER: CECO DOOR, ASSA ABLOY OR APPROVED EQUAL.

INTERIOR DOORS AND FRAMES:

- HEAVY-DUTY DOORS AND FRAMES: SM A250.B, LEVEL 2
1. PHYSICAL PERFORMANCE: LEVEL B ACCORDING TO SM A250.A.
 2. DOORS:
 - a. TYPE: AS INDICATED IN THE DOOR AND FRAME SCHEDULE.
 - b. THICKNESS: 1-3/4" INCHES.
 - c. FACE: METALIC-COATED STEEL SHEET, MINIMUM THICKNESS OF 0.042 INCH.
 - d. EDGE CONSTRUCTION: MODEL 1, FULL FLUSH.
 - e. CORE: MANUFACTURER'S STANDARD KRAFT-PAPEER HONEYCOMB, POLYSTYRENE, POLYURETHANE, POLYISOCYANURATE, MINERAL-BOARD, OR VERTICAL STEEL-STIFFENCORE AT MANUFACTURER'S DISCRETION.
 3. FRAMES:
 - a. MATERIALS: UNCOATED STEEL SHEET, MINIMUM THICKNESS OF 0.053 INCH.

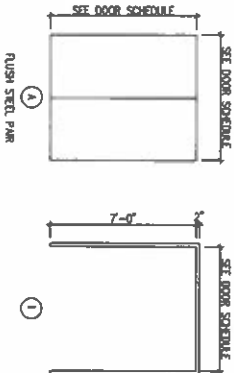
EXTERIOR DOORS AND FRAMES:

- HEAVY-DUTY DOORS AND FRAMES: SM A250.B, LEVEL 2
1. PHYSICAL PERFORMANCE: LEVEL B ACCORDING TO SM A250.A.
 2. DOORS:
 - a. TYPE: AS INDICATED IN THE DOOR AND FRAME SCHEDULE.
 - b. THICKNESS: 1-3/4" INCHES.
 - c. FACE: METALIC-COATED STEEL SHEET, MINIMUM THICKNESS OF 0.042 INCH, WITH MINIMUM A40 (Z1720) COATING.
 - d. EDGE CONSTRUCTION: MODEL 1, FULL FLUSH.
 - e. CORE: MANUFACTURER'S STANDARD KRAFT-PAPEER HONEYCOMB, POLYSTYRENE, POLYURETHANE, POLYISOCYANURATE, MINERAL-BOARD, OR VERTICAL STEEL-STIFFENCORE AT MANUFACTURER'S DISCRETION.
 3. FRAMES:
 - a. MATERIALS: METALIC-COATED STEEL SHEET, MINIMUM THICKNESS OF 0.05 INCH, WITH A40 (Z1720) COATING.
 - b. CONSTRUCTION: FACE WELDED.
 - c. EXPOSED FINISH: PRIME.

STEEL FINISHES:

1. SHOP PRIMER: MANUFACTURER'S STANDARD, FAST-CURING, LEAD AND CHROMATE-FREE PRIMER COMPLYING WITH SM A-250.10.

DOOR SCHEDULE						
DOOR	DOOR TYPE	DOOR SIZE	DOOR WEIGHT	FRAME	FINISH	REMARKS
B01A	A	7'-0" x 7'-0" ALUMINUM	STL/P/10	1	HM/P/10	SEE DETAIL 2-A301
121A	A	PRIM 3'-0" x 7'-0"	STL/P/10	1	HM/P/10	SEE DETAIL 2-A301
121B	A	PRIM 3'-0" x 7'-0"	STL/P/10	1	HM/P/10	SEE DETAIL 1-A301



FINISH SCHEDULE						
ROOM #	ROOM NAME	DOOR	FACE	WALLS	CEILING	REMARKS
100	TOILET	EXIST/CLWM	EXIST/CLWM	EXIST	EXIST	CLEAN AND SEAL TERRA OTITA FLOORS
103	WORKER'S LOCKER ROOM	EXIST	EXIST	EXIST	EXIST	
104	TOILET	ALT. II-EX/CLWM	ALT. II-EX/CLWM	EXIST/CLWM	EXIST/CLWM	CLEAN AND SEAL TERRA OTITA FLOORS
105	SHOWERS	EXIST/CLWM	EXIST/CLWM	EXIST/CLWM	EXIST	CLEAN AND SEAL TERRA OTITA FLOORS
120	ENTRANCE COURT	EXIST	EXIST	EXIST	EXIST	
121	PASSAGE	EXIST	EXIST	EXIST	EXIST	
122	TOILET	EXIST/CLWM	EXIST/CLWM	EXIST	EXIST	CLEAN AND SEAL TERRA OTITA FLOORS
126	WOMEN'S LOCKER ROOM	EXIST	EXIST	EXIST	EXIST	
127	TOILET	ALT. II-EX/CLWM	ALT. II-EX/CLWM	EXIST	EXIST	CLEAN AND SEAL TERRA OTITA FLOORS
128	SHOWERS	EXIST/CLWM	EXIST/CLWM	EXIST	EXIST	CLEAN AND SEAL TERRA OTITA FLOORS

GENERAL NOTE

1. NO FINISH WORK AT CONNECTIONS. PAINT WALLS DISTURBED BY NEW WORK.

IN CHARGE OF _____
CHECKED BY _____
MADE BY _____

UNAUTHORIZED ALTERATION OF, OR ADDITION TO THIS PLAN IS A VIOLATION OF ARTICLE 140, SECTION 2209.2 OF THE NEW YORK STATE EDUCATION LAW.

DATE: 4/13/2018		SCALE: AS NOTED	
REVISION: 1		SHEET NO. 20 OF 83	
CONTRACT NO. 17-544		SHEET NUMBER A-301	
DIVISION OF ENGINEERING		COMPETITION POOL RECONSTRUCTION	
DEPARTMENT OF PUBLIC WORKS AND TRANSPORTATION		DOOR AND FINISH SCHEDULE AND DETAILS	
WESTCHESTER COUNTY, NEW YORK		CONTRACTOR: _____	
SIGNATURE: _____		NAME: _____	
DATE: _____		DATE: _____	
PROJECT COORDINATOR: _____		PROJECT COORDINATOR: _____	
AS BUILT - CHANGES AS NOTED		AS BUILT - NO CHANGES	
AS BUILT - NO CHANGES		AS BUILT - NO CHANGES	