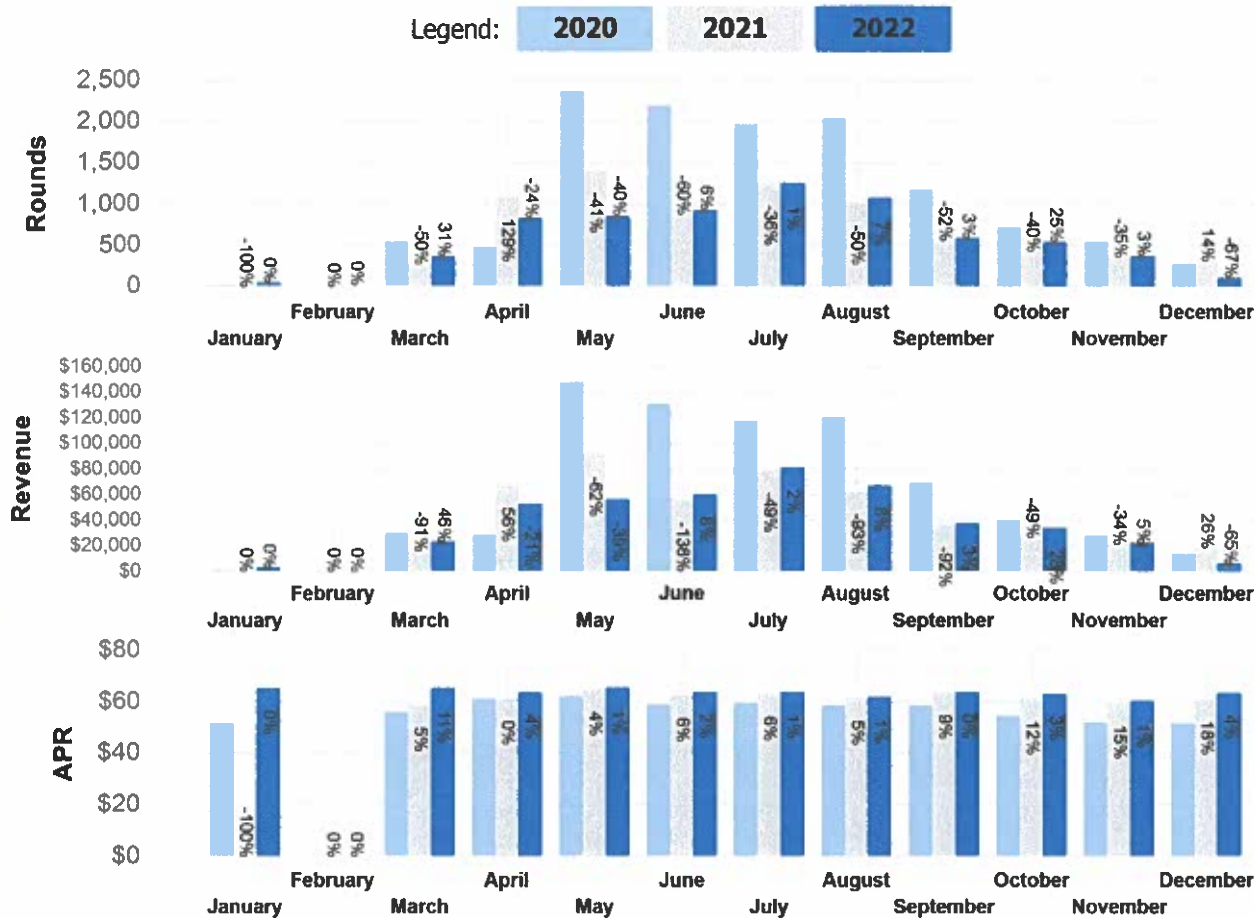


Course: **Dunwoodie Golf Course**  
 Rate Set Holes: **(All)**  
 Rate Sets: **(All)**

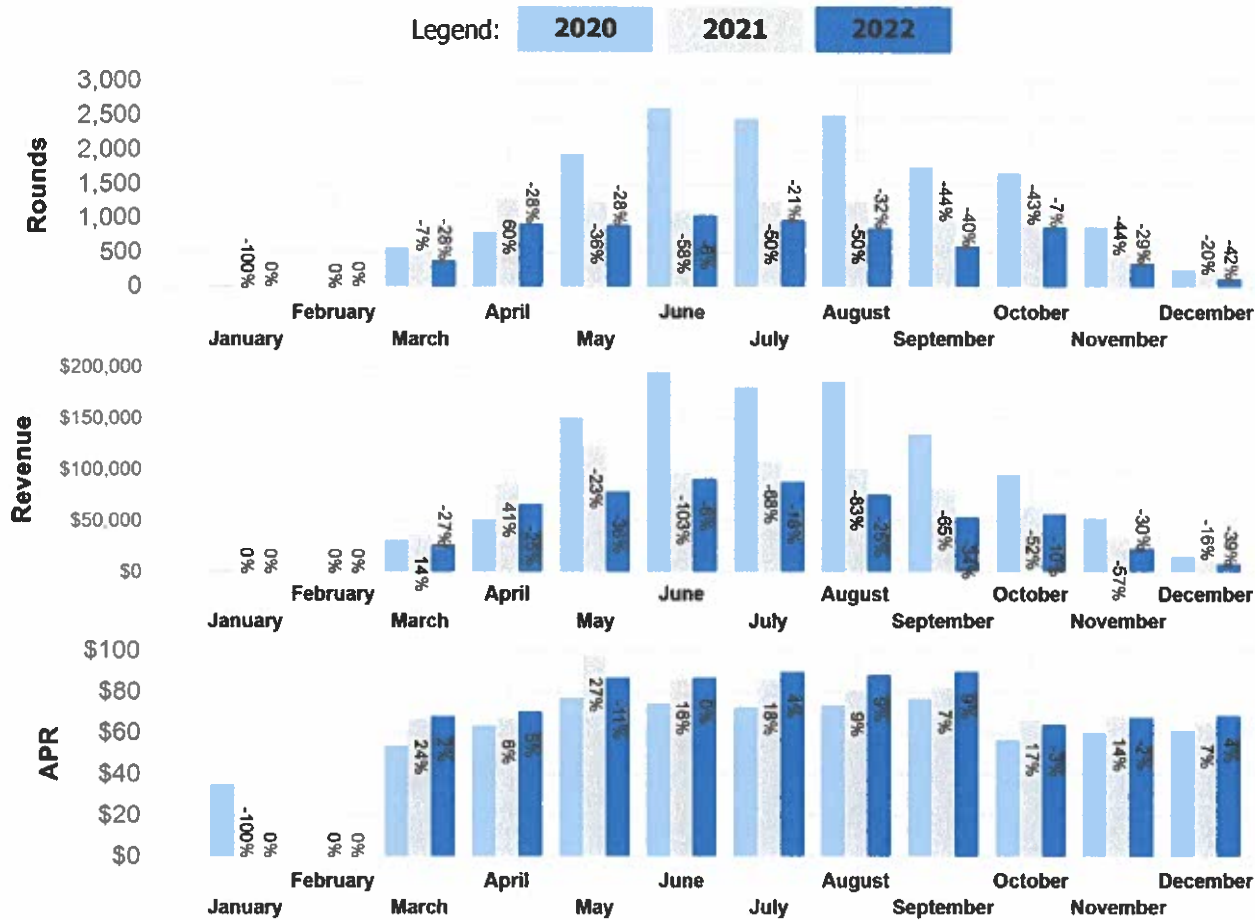
Date Range: **1/1/2022 - 12/31/2022**  
 Method: **(All)**  
 Owner Groups: **(All)**



Month	Rounds			Revenue			APR		
	2020	2021	2022	2020	2021	2022	2020	2021	2022
January	10		44	\$515.00		\$2,871.00	\$51.50		\$65.25
February									
March	537	269	353	\$30,165.00	\$15,819.00	\$23,082.00	\$56.17	\$58.81	\$65.39
April	475	1,090	825	\$29,114.00	\$66,732.00	\$52,450.00	\$61.29	\$61.22	\$63.58
May	2,369	1,408	851	\$147,325.00	\$91,124.00	\$55,816.00	\$62.19	\$64.72	\$65.59
June	2,200	881	930	\$130,277.00	\$55,146.00	\$59,362.00	\$59.22	\$62.59	\$63.83
July	1,970	1,255	1,263	\$117,265.00	\$78,962.00	\$80,647.00	\$59.53	\$62.92	\$63.85
August	2,042	1,011	1,080	\$119,922.00	\$62,052.00	\$66,899.00	\$58.73	\$61.38	\$61.94
September	1,181	566	583	\$69,233.00	\$36,086.00	\$37,188.00	\$58.62	\$63.76	\$63.79
October	722	431	537	\$39,549.00	\$26,456.00	\$33,891.00	\$54.78	\$61.38	\$63.11
November	551	359	371	\$28,646.00	\$21,380.00	\$22,415.00	\$51.99	\$59.55	\$60.42
December	272	310	103	\$14,088.00	\$18,981.00	\$6,549.00	\$51.79	\$61.23	\$63.58
Totals	12,329	7,580	6,940	\$726,099.00	\$472,738.00	\$441,170.00	\$58.89	\$62.37	\$63.57

Course: **Hudson Hills Golf Course**  
 Rate Set Holes: **(All)**  
 Rate Sets: **(All)**

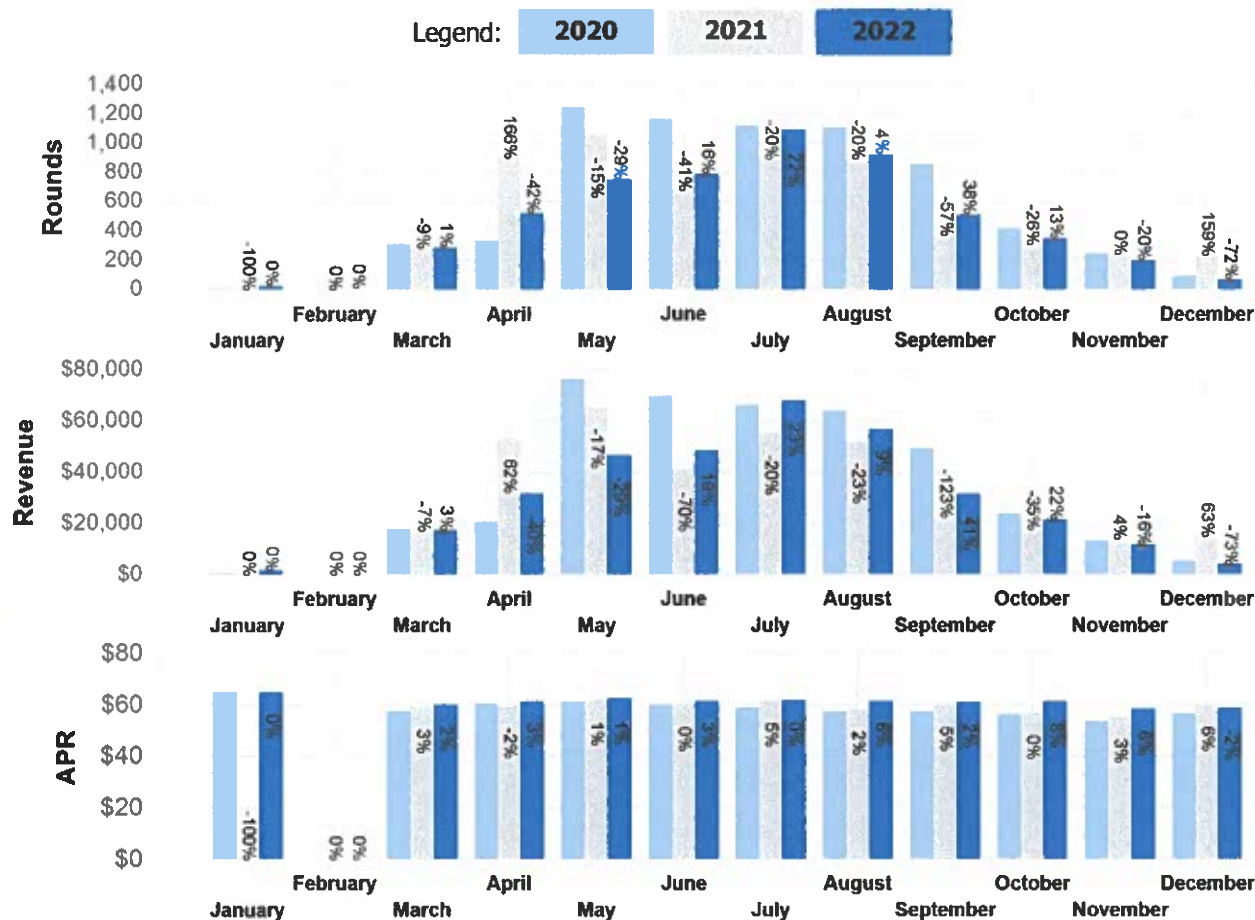
Date Range: **1/1/2022 - 12/31/2022**  
 Method: **(All)**  
 Owner Groups: **(All)**



Month	Rounds			Revenue			APR		
	2020	2021	2022	2020	2021	2022	2020	2021	2022
January	17			\$598.00			\$35.18		
February									
March	580	539	387	\$31,337.50	\$36,240.00	\$26,450.00	\$54.03	\$67.24	\$68.35
April	811	1,300	933	\$51,517.00	\$87,835.00	\$65,905.00	\$63.52	\$67.57	\$70.64
May	1,946	1,252	904	\$150,158.00	\$122,272.00	\$78,663.00	\$77.16	\$97.66	\$87.02
June	2,622	1,111	1,043	\$195,494.00	\$96,316.00	\$90,850.00	\$74.56	\$86.69	\$87.10
July	2,466	1,245	978	\$180,323.00	\$107,588.00	\$88,099.00	\$73.12	\$86.42	\$90.08
August	2,507	1,250	856	\$185,646.00	\$101,208.00	\$75,553.00	\$74.05	\$80.97	\$88.26
September	1,748	985	594	\$134,396.00	\$81,335.00	\$53,426.00	\$76.89	\$82.57	\$89.94
October	1,665	941	873	\$94,922.00	\$62,573.00	\$56,042.00	\$57.01	\$66.50	\$64.19
November	873	486	345	\$52,551.00	\$33,469.00	\$23,359.00	\$60.20	\$68.87	\$67.71
December	255	205	119	\$15,655.00	\$13,480.00	\$8,175.00	\$61.39	\$65.76	\$68.70
Totals	15,490	9,314	7,032	\$1,092,597.50	\$742,316.00	\$566,522.00	\$70.54	\$79.70	\$80.56

Course: **Maple Moor Golf Course**  
 Rate Set Holes: **(All)**  
 Rate Sets: **(All)**

Date Range: **1/1/2022 - 12/31/2022**  
 Method: **(All)**  
 Owner Groups: **(All)**



Month	Rounds			Revenue			APR		
	2020	2021	2022	2020	2021	2022	2020	2021	2022
January	3		26	\$195.00		\$1,692.00	\$65.00		\$65.08
February									
March	312	284	287	\$18,039.00	\$16,832.00	\$17,328.00	\$57.82	\$59.27	\$60.38
April	337	898	519	\$20,468.00	\$53,597.00	\$31,955.00	\$60.74	\$59.68	\$61.57
May	1,243	1,053	747	\$76,361.00	\$65,487.00	\$46,792.00	\$61.43	\$62.19	\$62.64
June	1,161	680	787	\$69,664.70	\$40,963.00	\$48,623.00	\$60.00	\$60.24	\$61.78
July	1,119	893	1,091	\$66,210.00	\$55,268.00	\$67,726.00	\$59.17	\$61.89	\$62.08
August	1,110	888	921	\$63,899.00	\$51,934.00	\$56,843.00	\$57.57	\$58.48	\$61.72
September	859	369	510	\$49,335.00	\$22,170.00	\$31,279.00	\$57.43	\$60.08	\$61.33
October	419	309	348	\$23,742.00	\$17,595.00	\$21,419.00	\$56.66	\$56.94	\$61.55
November	246	247	197	\$13,202.00	\$13,709.00	\$11,536.00	\$53.67	\$55.50	\$58.56
December	94	243	68	\$5,338.00	\$14,602.00	\$4,004.00	\$56.79	\$60.09	\$58.88
Totals	6,903	5,864	5,501	\$406,453.70	\$352,157.00	\$339,197.00	\$58.88	\$60.05	\$61.66



Course: Mohansic Golf Course

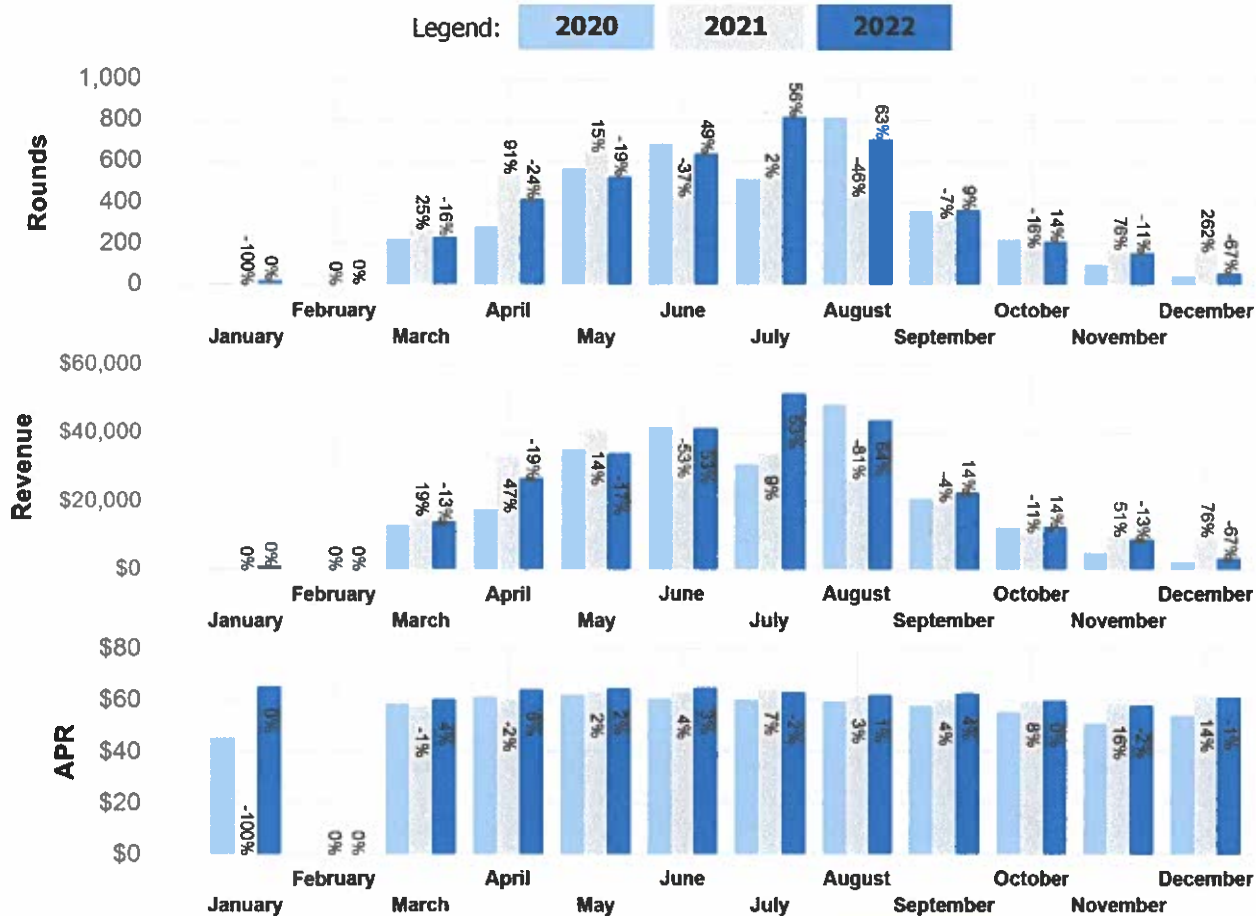
Date Range: 1/1/2022 - 12/31/2022

Rate Set Holes: (All)

Method: (All)

Rate Sets: (All)

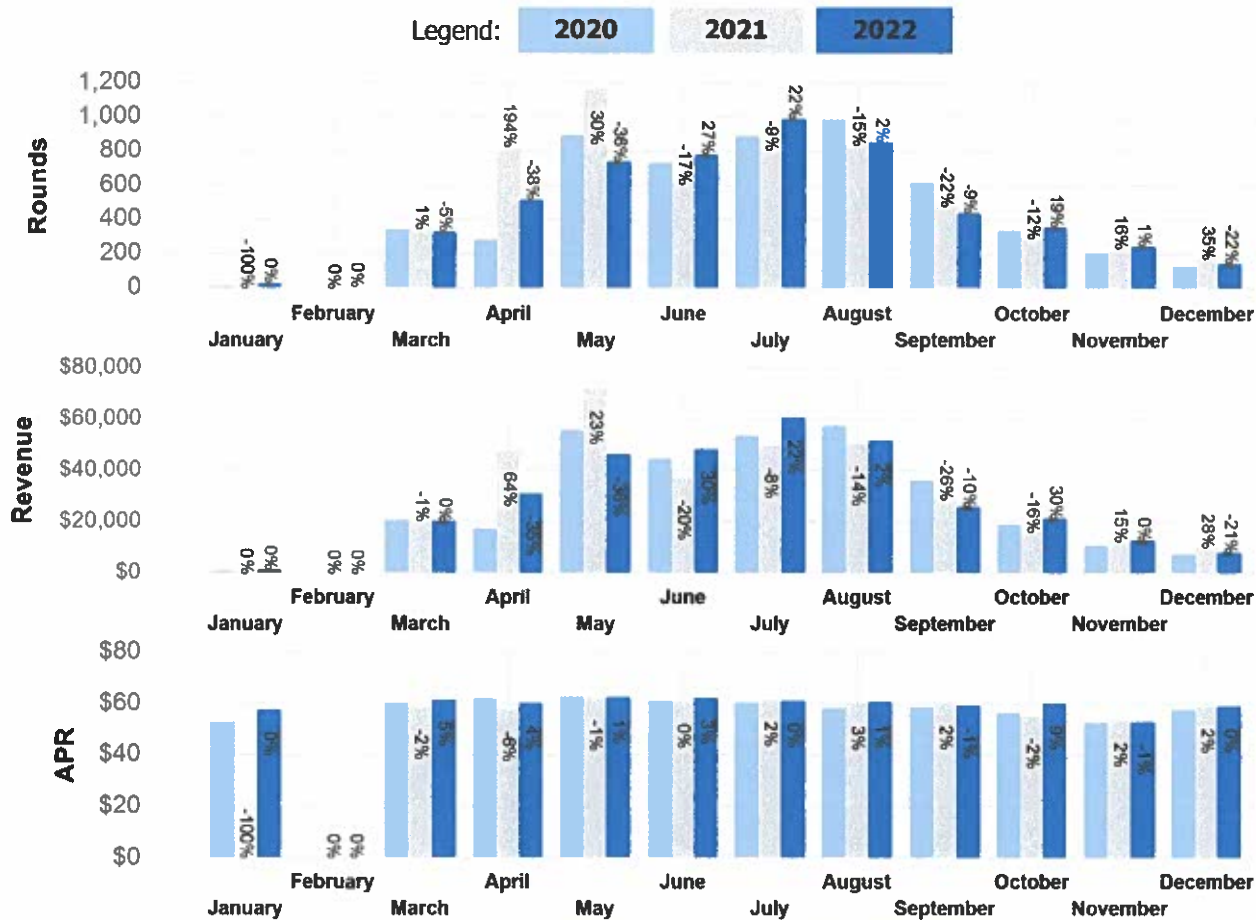
Owner Groups: (All)



Month	Rounds			Revenue			APR		
	2020	2021	2022	2020	2021	2022	2020	2021	2022
January	3		18	\$135.00		\$1,176.00	\$45.00		\$65.33
February									
March	221	276	232	\$12,948.00	\$15,982.00	\$13,968.00	\$58.59	\$57.91	\$60.21
April	285	544	416	\$17,508.00	\$32,858.00	\$26,656.00	\$61.43	\$60.40	\$64.08
May	563	647	526	\$35,056.00	\$40,964.00	\$33,962.00	\$62.27	\$63.31	\$64.57
June	684	430	639	\$41,491.00	\$27,031.00	\$41,370.00	\$60.66	\$62.86	\$64.74
July	513	525	818	\$30,824.00	\$33,821.00	\$51,631.00	\$60.09	\$64.42	\$63.12
August	812	435	708	\$48,444.00	\$26,698.00	\$43,812.00	\$59.66	\$61.37	\$61.88
September	357	331	362	\$20,673.00	\$19,944.00	\$22,664.00	\$57.91	\$60.25	\$62.61
October	220	184	209	\$12,229.00	\$11,024.00	\$12,536.00	\$55.59	\$59.91	\$59.98
November	99	174	154	\$5,055.00	\$10,264.00	\$8,940.00	\$51.06	\$58.99	\$58.05
December	45	163	54	\$2,436.00	\$10,083.00	\$3,307.00	\$54.13	\$61.86	\$61.24
Totals	3,802	3,709	4,136	\$226,799.00	\$228,669.00	\$260,022.00	\$59.65	\$61.65	\$62.87

Course: **Saxon Woods Golf Course**  
 Rate Set Holes: **(All)**  
 Rate Sets: **(All)**

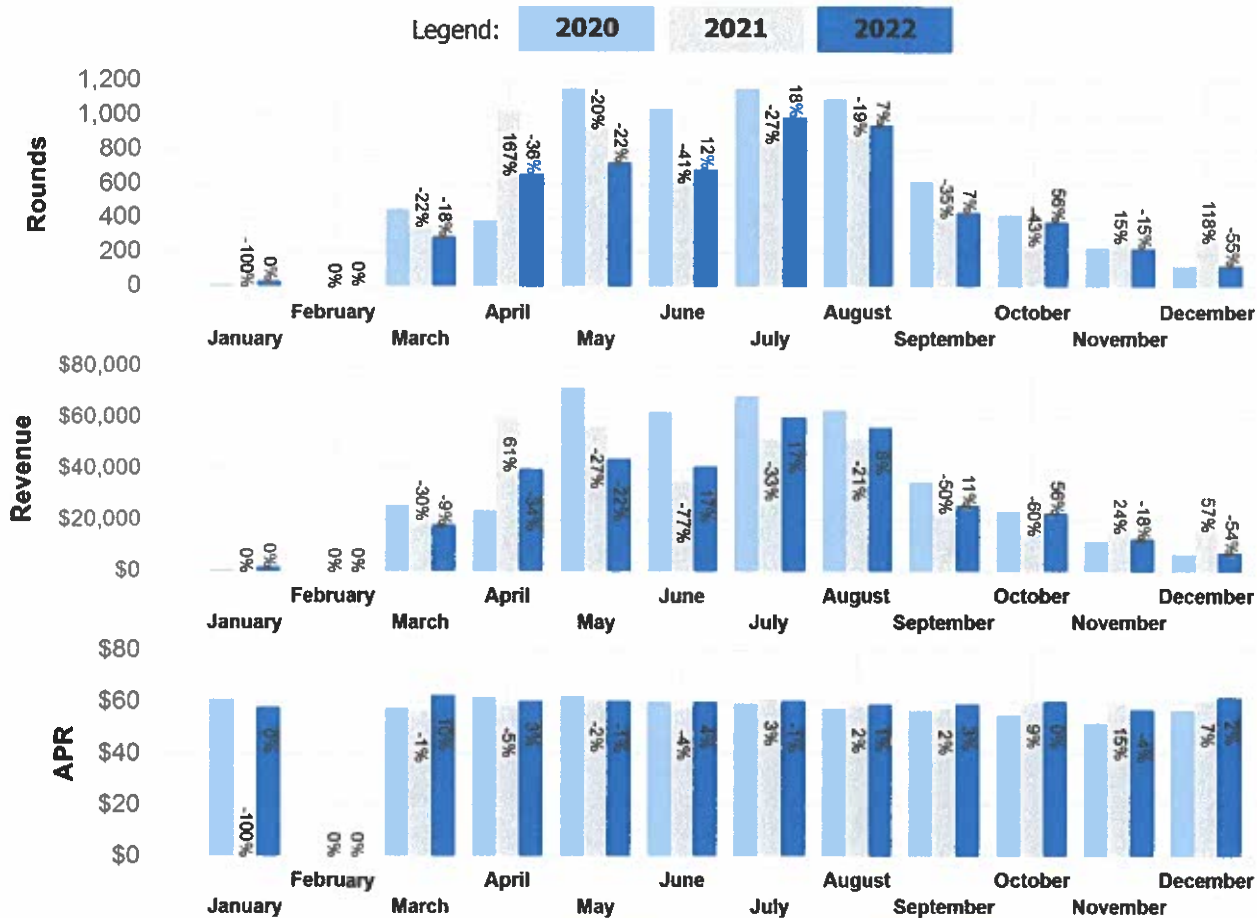
Date Range: **1/1/2022 - 12/31/2022**  
 Method: **(All)**  
 Owner Groups: **(All)**



Month	Rounds			Revenue			APR		
	2020	2021	2022	2020	2021	2022	2020	2021	2022
January	9	25	25	\$473.00		\$1,438.00	\$52.56		\$57.52
February									
March	343	346	327	\$20,516.00	\$20,242.00	\$20,144.00	\$59.81	\$58.50	\$61.60
April	281	826	513	\$17,314.00	\$47,708.00	\$30,872.00	\$61.62	\$57.76	\$60.18
May	893	1,162	738	\$55,672.00	\$71,977.00	\$46,136.00	\$62.34	\$61.94	\$62.51
June	733	612	777	\$44,517.00	\$37,115.00	\$48,339.00	\$60.73	\$60.65	\$62.21
July	889	808	988	\$53,553.00	\$49,640.00	\$60,443.00	\$60.24	\$61.44	\$61.18
August	981	838	851	\$57,402.00	\$50,262.00	\$51,512.00	\$58.51	\$59.98	\$60.53
September	616	480	436	\$36,187.00	\$28,824.00	\$25,857.00	\$58.75	\$60.05	\$59.31
October	336	296	353	\$18,951.00	\$16,332.00	\$21,213.00	\$56.40	\$55.18	\$60.09
November	206	238	241	\$10,827.00	\$12,745.00	\$12,747.00	\$52.56	\$53.55	\$52.89
December	130	176	138	\$7,497.00	\$10,368.00	\$8,152.00	\$57.67	\$58.91	\$59.07
Totals	5,417	5,782	5,387	\$322,909.00	\$345,213.00	\$326,853.00	\$59.61	\$59.70	\$60.67

Course: **Sprain Lake Golf Course**  
 Rate Set Holes: **(All)**  
 Rate Sets: **(All)**

Date Range: **1/1/2022 - 12/31/2022**  
 Method: **(All)**  
 Owner Groups: **(All)**

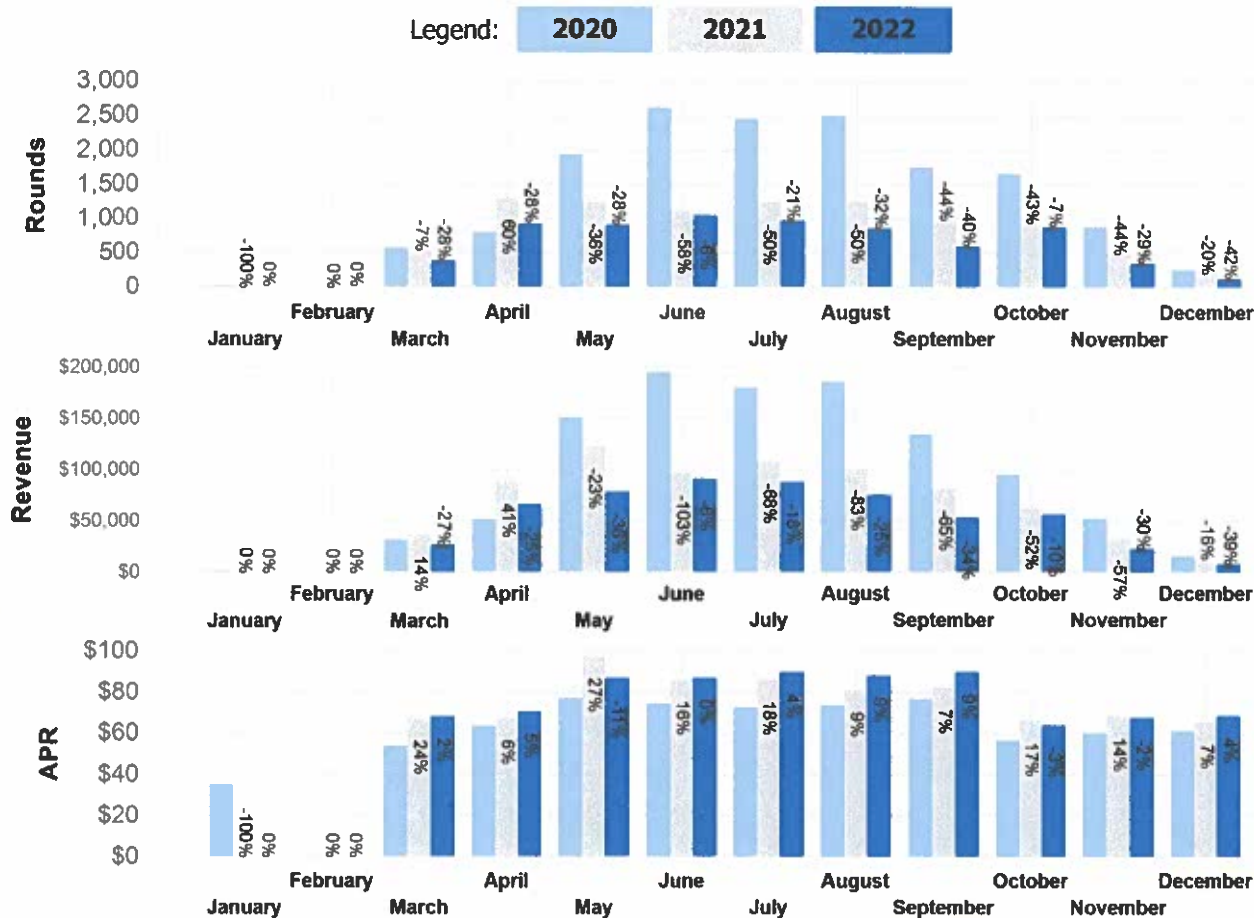


Month	Rounds			Revenue			APR		
	2020	2021	2022	2020	2021	2022	2020	2021	2022
January	14		30	\$854.00		\$1,738.00	\$61.00		\$57.93
February									
March	454	354	291	\$26,076.00	\$20,088.00	\$18,232.00	\$57.44	\$56.75	\$62.65
April	387	1,032	658	\$23,895.00	\$60,559.00	\$39,807.00	\$61.74	\$58.68	\$60.50
May	1,158	928	725	\$71,923.00	\$56,622.00	\$43,922.00	\$62.11	\$61.02	\$60.58
June	1,038	611	685	\$62,344.00	\$35,243.00	\$41,083.00	\$60.06	\$57.68	\$59.98
July	1,157	841	989	\$68,634.00	\$51,587.00	\$60,225.00	\$59.32	\$61.34	\$60.89
August	1,095	886	946	\$62,826.00	\$51,899.00	\$55,981.00	\$57.38	\$58.58	\$59.18
September	617	403	433	\$34,961.00	\$23,244.00	\$25,720.00	\$56.66	\$57.68	\$59.40
October	423	243	379	\$23,346.00	\$14,598.00	\$22,822.00	\$55.19	\$60.07	\$60.22
November	228	262	224	\$11,802.00	\$15,588.00	\$12,803.00	\$51.76	\$59.50	\$57.16
December	123	268	121	\$7,016.00	\$16,302.00	\$7,488.00	\$57.04	\$60.83	\$61.88
Totals	6,694	5,828	5,481	\$393,677.00	\$345,730.00	\$329,821.00	\$58.81	\$59.32	\$60.18



Course: **Hudson Hills Golf Course**  
 Rate Set Holes: **(All)**  
 Rate Sets: **(All)**

Date Range: **1/1/2022 - 12/31/2022**  
 Method: **(All)**  
 Owner Groups: **(All)**



Month	Rounds			Revenue			APR		
	2020	2021	2022	2020	2021	2022	2020	2021	2022
January	17			\$598.00			\$35.18		
February									
March	580	539	387	\$31,337.50	\$36,240.00	\$26,450.00	\$54.03	\$67.24	\$68.35
April	811	1,300	933	\$51,517.00	\$87,835.00	\$65,905.00	\$63.52	\$67.57	\$70.64
May	1,946	1,252	904	\$150,158.00	\$122,272.00	\$78,663.00	\$77.16	\$97.66	\$87.02
June	2,622	1,111	1,043	\$195,494.00	\$96,316.00	\$90,850.00	\$74.56	\$86.69	\$87.10
July	2,466	1,245	978	\$180,323.00	\$107,588.00	\$88,099.00	\$73.12	\$86.42	\$90.08
August	2,507	1,250	856	\$185,646.00	\$101,208.00	\$75,553.00	\$74.05	\$80.97	\$88.26
September	1,748	985	594	\$134,396.00	\$81,335.00	\$53,426.00	\$76.89	\$82.57	\$89.94
October	1,665	941	873	\$94,922.00	\$62,573.00	\$56,042.00	\$57.01	\$66.50	\$64.19
November	873	486	345	\$52,551.00	\$33,469.00	\$23,359.00	\$60.20	\$68.87	\$67.71
December	255	205	119	\$15,655.00	\$13,480.00	\$8,175.00	\$61.39	\$65.76	\$68.70
Totals	15,490	9,314	7,032	\$1,092,597.50	\$742,316.00	\$566,522.00	\$70.54	\$79.70	\$80.56